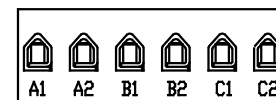
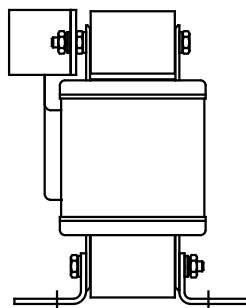
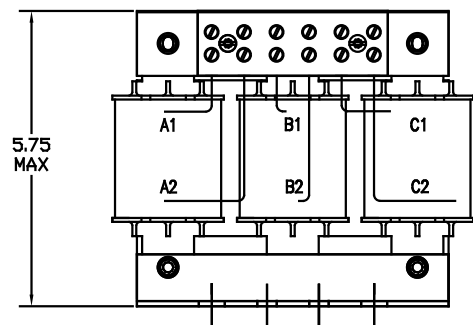
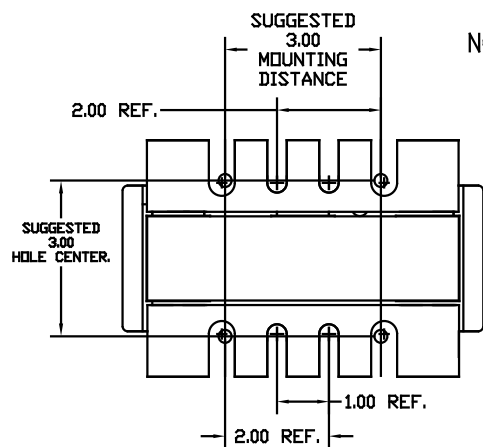


CATALOG NO	VOLTS(V.)	__mH±10%	__AMPS(A)	APPROX WT-LBS	TORQUE(LB-IN)
KLRUL18ETB	28.75	2.44	18	17	20
KLRUL21CTB	24	1.750	21	17	20
KLRUL21ETB	28.75	2.10	21	17	20
KLRUL25CTB	24	1.47	25	17	20
KLRUL27CTB	24	1.36	27	17	20
KLRUL35ATB	14.4	.630	35	16	20
KLRUL35DTB	17.25	.755	35	16	20
KLRUL45ATB	14.4	.490	45	17	20



TERMINAL BLK MARKING

BLOCK WIRE RANGE #18-#4 AWG
FOR REACTOR AND
TIGHTENING TORQUE. 20 LB-IN



NOTE: A1, A2, B1, B2, C1, C2,
MARKINGS ON COIL AND TERMINAL BLOCK
FOR REFERENCE ONLY.

<p>TRANS-COIL, INC MILWAUKEE WI WWW.transcoil.com 800-824-8282</p>	Performance and Protection for Drives.	
	<p>KLR Series Line Reactor</p> <p>CATALOG# _____</p> <p>3PH, 60Hz, 600V Max, _____ Amps</p> <p>40C Amb Max, 115C Rise</p> <p>Terminal Torque _____ LB-IN.</p>	

NO	REVISION	DATE	BY	TOLERANCES (EXCEPT AS NOTED)	7878 N. 86th STREET MILWAUKEE, WI 53224
				DECIMAL .XX ± .03 .XXX ± .01	
				FRACTIONAL ± 1/32	
				ANGULAR ± 1/2°	
				DRN BY DSW DATE 05/10/04 DWG. NO. BKLRULOPEN-6DG SCALE TO FIT APPRVD. BKLRULOPEN-6DG SHT. 1 OF 1	