

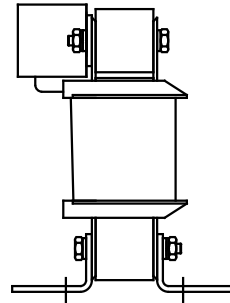
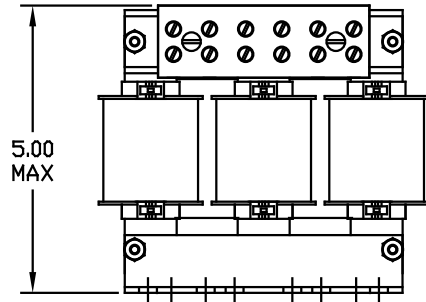
CATALOG NO	VOLTS(V)	__mH-±10%	__AMPS(A)	APPROX WT-LBS	TORQUE(LB-IN)
KLRUL16ATB	14.40	1.38	16	8	20
KLRUL16BTB	7.20	.689	16	7	20
KLRUL16DTB	17.25	1.65	16	8	20
KLRUL16FTB	8.62	.826	16	7	20

NOTE: A1, A2, B1, B2, C1, C2, MARKINGS ON TERMINAL BLOCK FOR REFERENCE ONLY.



TERMINAL BLK MARKING

BLOCK WIRE RANGE #18-#4 AWG
FOR REACTOR AND
TIGHTENING TORQUE. 20 LB-IN



TCI Performance and Protection for Drives.

TRANS-COIL, INC
MILWAUKEE WI
WWW.transcoil.com
800-824-8282

KLR Series Line Reactor

CATALOG# _____

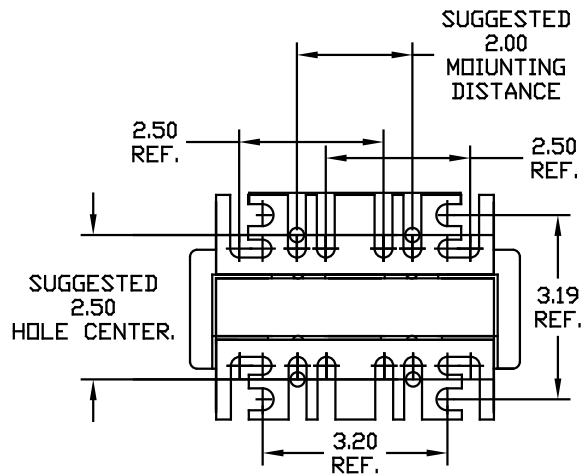
3PH, 60Hz, 600V Max, _____ Amps

40C Amb Max, 115C Rise

Terminal Torque _____ LB-IN

UL LISTED

CE



NO	REVISION	DATE	BY	TOLERANCES EXCEPT AS NOTED	7878 N. 86th STREET MILWAUKEE, WI 53224 KLRUL OPEN (FRAME B) LINE REACTOR	DRN BY	DATE	DWG NO.
				DECIMAL		DSW	05/10/04	B
				.XX ± .03		SCALE	APPROV.	
				.XXX ± .01		TO FIT		
				FRACTIONAL				
				± 1/32				
				ANGULAR				
				± 1/2°				
					KLRULOPEN-4DG SHT. 1 of 1			