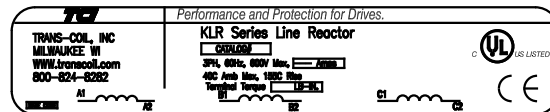
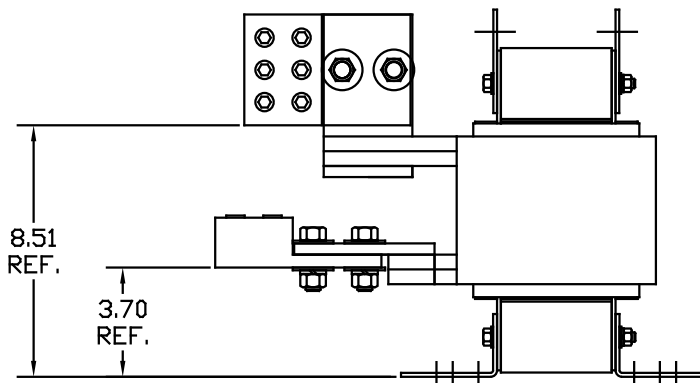
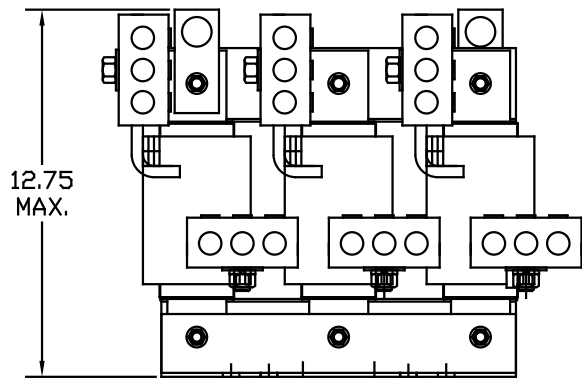


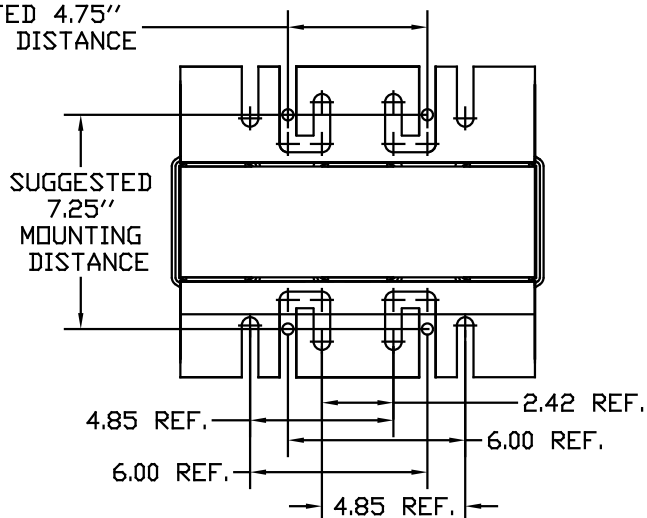
CATALOG NO	VOLTS(V.)	__mH±10%	__AMPS(A)	APPROX WT-LBS
KLRUL850BPT	7.20	.013	850	180
KLRUL950BPT	7.20	.012	950	184



LUG WIRE RANGE THREE 600MCM-2, AL. OR CU.
FOR REACTOR.
TIGHTENING TORQUE. 500 LB-IN



SUGGESTED 4.75" MOUNTING DISTANCE



TOLERANCES EXCEPT AS NOTED				TOLERANCES EXCEPT AS NOTED	7878 N. 86th STREET MILWAUKEE, WI 53224
DECIMAL	FRACTIONAL	ANGULAR	SCALE		
XX ±.03	± 1/32	± 1/2°	TO FIT	KLRUL OPEN (FRAME S) LINE REACTOR	DRAWN BY DSW DATE 05/17/04 DWG. NO. KLRULOPEN-42DG
.XXX ±.01					
NO	REVISION	DATE	BY		