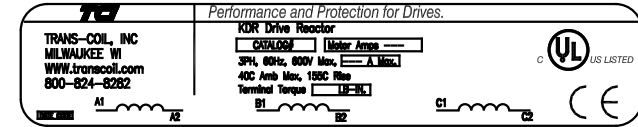
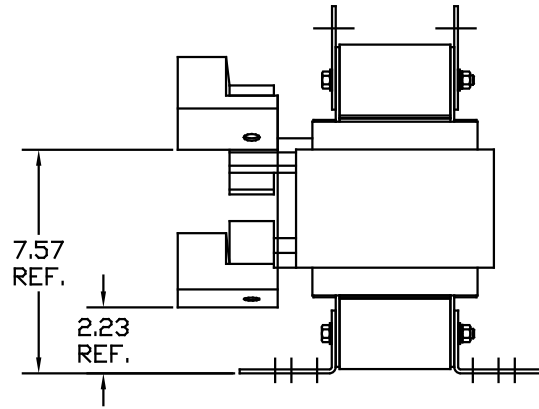
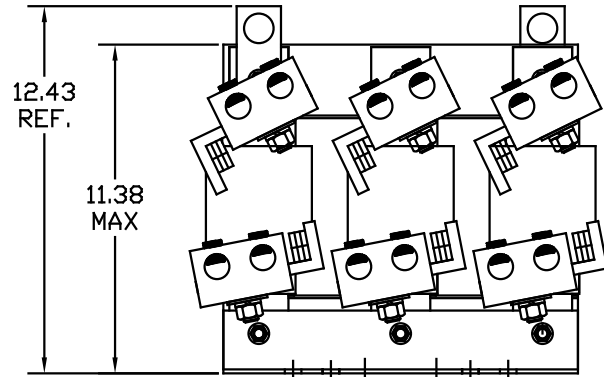


CATALOG NO	VOLTS(V.)	__mH±10%	__AMPS(A)	APPROX WT-LBS
KLRUL750BPT	7.20	.015	750	170
KLRUL750FPT	8.62	.018	750	170

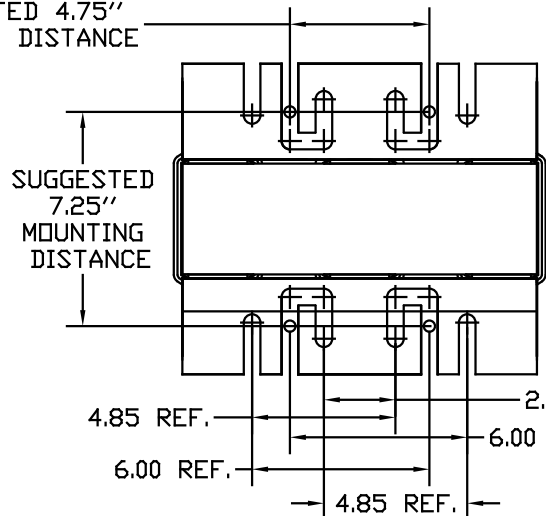


LUG WIRE RANGE TWO 800MCM-300MCM, AL. OR CU.
FOR REACTOR.
TIGHTENING TORQUE. 375 LB-IN



NOTE: LUGS ROTATED TO MEET CLEARANCE (PHASE TO PHASE), AND TO MEET CLEARANCE FROM LUGS TO GROUNDING SURFACE.

SUGGESTED 4.75" MOUNTING DISTANCE



				TOLERANCES EXCEPT AS NOTED:	7878 N. 86th STREET MILWAUKEE, WI 53224
				DECIMAL: .XX ±.03, .XXX±.01	
				FRACTIONAL: ± 1/32	KLRUL OPEN, (FRAME S) LINE REACTOR DWG. NO. KLRULOPEN-41DG SHT. 1 OF 1
				ANGULAR: ± 1/2°	
NO.	REVISION	DATE	BY	SCALE TO FIT	DESIGNED BY: DSW DATE: 05/17/04 APPROVED BY: [Signature]