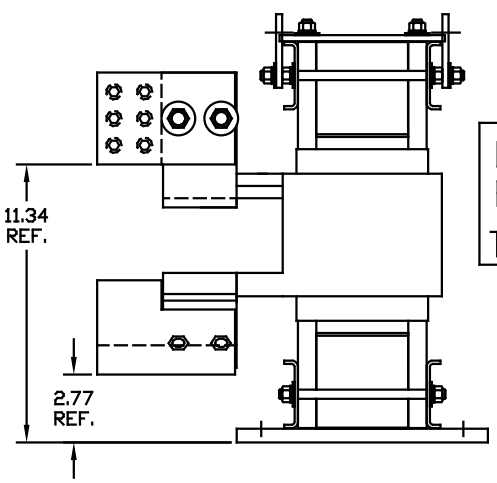
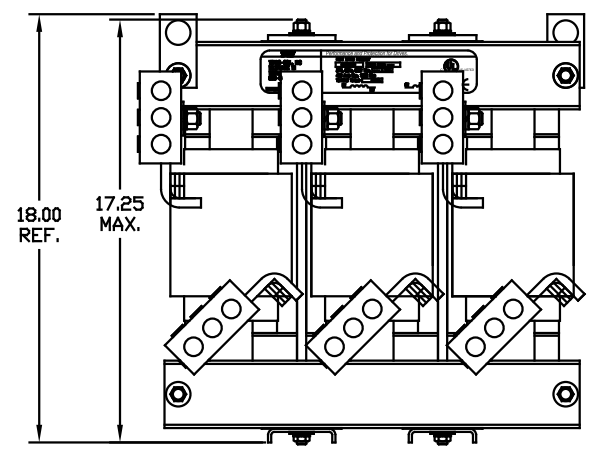


CATALOG NO	VOLTS(V.)	__mH-±10%	__AMPS(A)	APPROX WT-LBS
KLRUL850APT	14.40	.026	850	308
KLRUL850CPT	24.00	.043	850	298
KLRUL850DPT	17.24	.031	850	293
KLRUL850EPT	28.75	.052	850	308
KLRUL950APT	14.40	.023	950	295
KLRUL950CPT	24.00	.039	950	308
KLRUL950DPT	17.24	.027	950	298
KLRUL950EPT	28.75	.046	950	308



TCI Performance and Protection for Drives.

KDR Drive Reactor

TRANS-COIL, INC
MILWAUKEE, WI
WWW.TRANS-COIL.COM
800-824-8282

CATALOG Motor Amps
3PH, 60Hz, 600V Max, A Max.
40C Amb Max, 185C Rise
Terminal Torque LB-IN

UL LISTED

CE

LUG WIRE RANGE THREE 600MCM-2, AL. OR CU.
FOR REACTOR.
TIGHTENING TORQUE. 500 LB-IN

NOTE: LUGS ROTATED TO MEET CLEARANCE (PHASE TO PHASE), AND TO MEET CLEARANCE FROM LUGS TO GROUNDING SURFACE.

TOLERANCES EXCEPT AS NOTED:				7878 N. 86th STREET MILWAUKEE, WI 53224
				KLRUL OPEN (FRAME X) LINE REACTOR
				DSW 05/17/04 SCALE 1/4"=1"
NO	REVISION	DATE	BY	KLRULOPEN-39DG SHT.1 OF 1