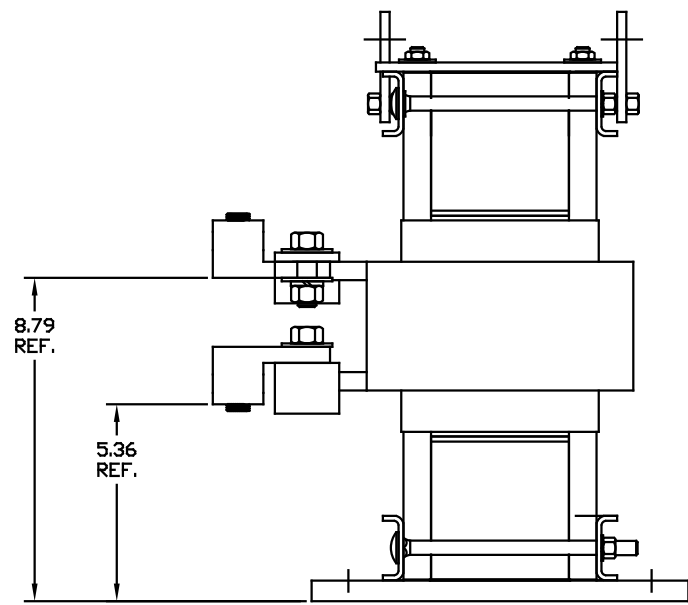
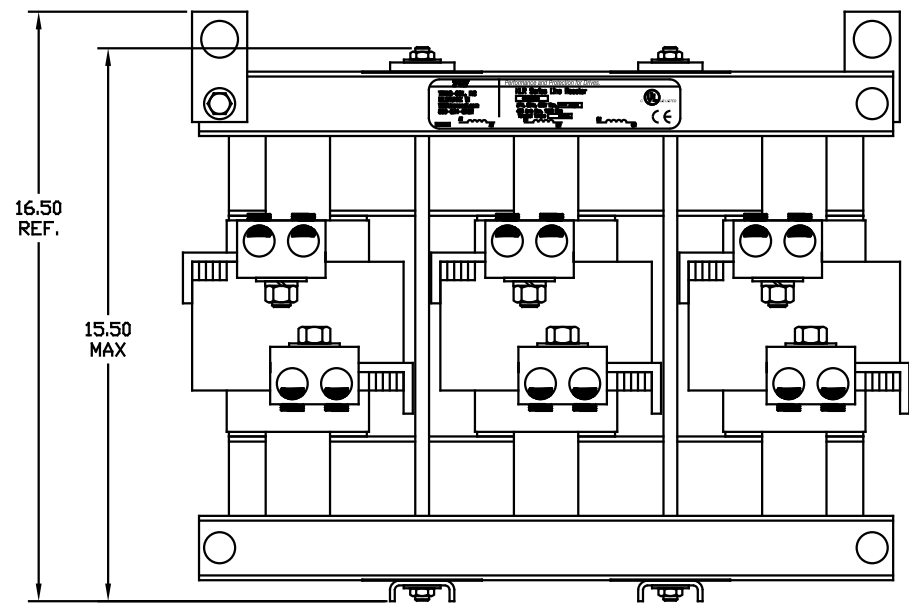


.44 X .75" LG SLOT  
(4 PLACES)

CATALOG NO	VOLTS(V.)	__mH±10%	__AMPS(A)	APPROX WT-LBS
KLRUL600EPT	28.74	.073	600	290

LUG WIRE RANGE TWO 600MCM-2, AL. OR CU.  
FOR REACTOR.  
TIGHTENING TORQUE. 500 LB-IN

<p>TRANS-COIL, INC MILWAUKEE WI WWW.transcoil.com 800-824-8282</p>	Performance and Protection for Drives.	
	<p>KLR Series Line Reactor</p> <p>CATALOG#</p> <p>3PH, 60Hz, 600V Max, --- Amps</p> <p>40C Amb Max, 155C Rise</p> <p>Terminal Torque LB-IN</p>	



TOLERANCES EXCEPT AS NOTED:				7878 N. 86th STREET MILWAUKEE, WI 53224
				KLRUL OPEN (FRAME X) LINE REACTOR
				DRG BY DSW DATE 05/14/04 DWG. NO. KLRULOPEN-37DG SCALE 3/8"=1" APPRVA
NO	REVISION	DATE	BY	SHT. 1 OF 1