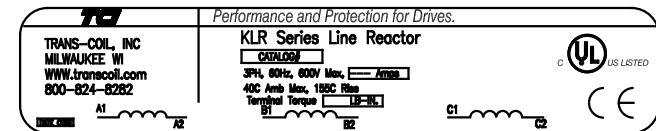
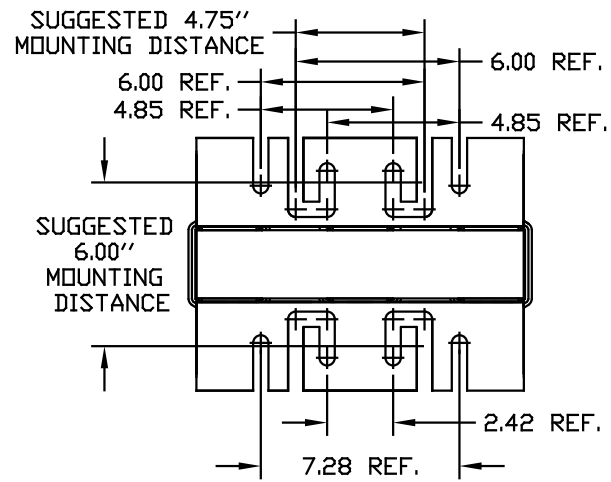
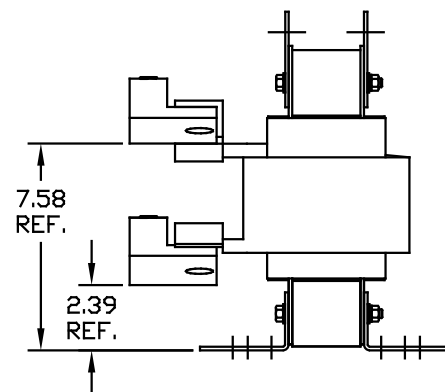
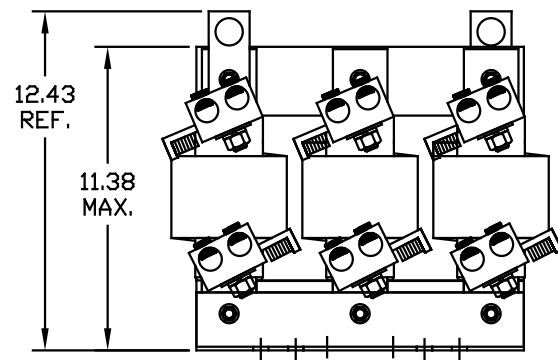


CATALOG NO	VOLTS(V.)	__mH±10%	__AMPS(A)	APPROX WT-LBS
KLRUL480APT	14.4	.046	480	125



LUG WIRE RANGE TWO 600MCM-2, AL. OR CU.
FOR REACTOR.
TIGHTENING TORQUE. 500 LB-IN



NOTE: ROTATE AS NEEDED TO MEET
.50 CLEARANCE BETWEEN TERMINAL
OR LUGS (PHASE TO PHASE).
ALSO .50 CLEARANCE FROM TERMINALS
OR LUGS TO GROUNDING SURFACE.

				TOLERANCES EXCEPT AS NOTED	TCI 7878 N. 86th STREET MILWAUKEE, WI 53224 KLRUL OPEN, (FRAME L) LINR REACTOR
				XX ± .03	
				XXX ± .01	
				FRACTIONAL ± 1/32	
				ANGULAR ± 1/2°	DSW 05/14/04 SCALE TO FIT
NO	REVISION	DATE	BY		