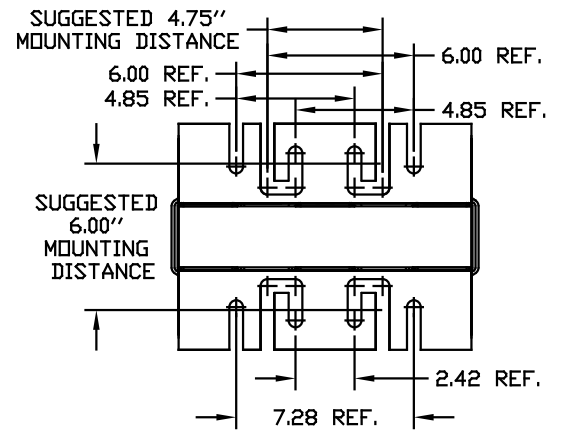
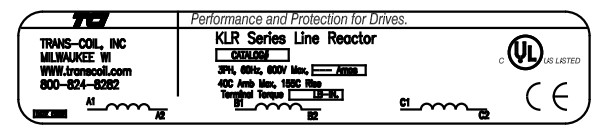
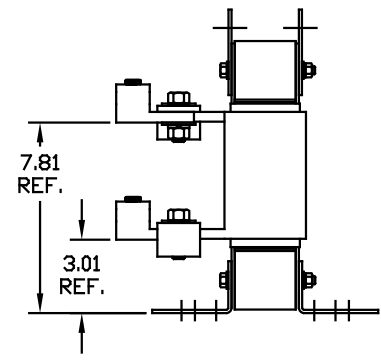
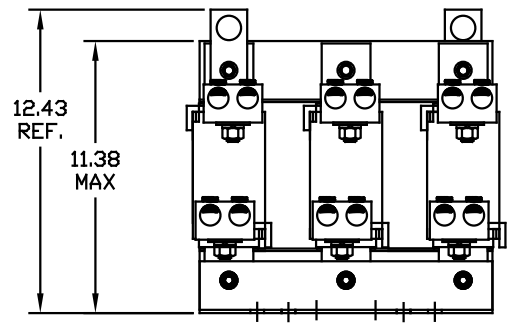


CATALOG NO	VOLTS(V.)	__mH±10%	__AMPS(A)	APPROX WT-LBS
KLRUL480BPT	7.20	.023	480	105
KLRUL480FPT	8.62	.028	480	105
KLRUL600BPT	7.20	.018	600	111

LUG WIRE RANGE TWO 600MCM-2, AL. OR CU.
FOR REACTOR.
TIGHTENING TORQUE. 500 LB-IN



NO	REVISION	DATE	BY	TOLERANCES EXCEPT AS NOTED: DECIMAL XX ± .03 .XXX ± .01 FRACTIONAL ± 1/32 ANGULAR ± 1/2°	SCALE TO FIT	DATE 05/14/04	APPV	DWG. NO. KLRULOPEN-32DG	SHT. 1 OF 1
								7878 N. 86th STREET MILWAUKEE, WI 53224 KLRUL OPEN, (FRAME L) LINE REACTOR	