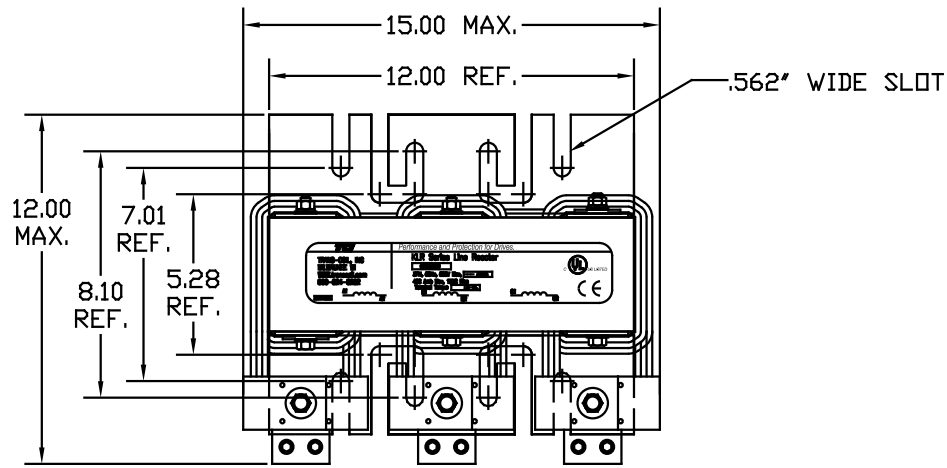
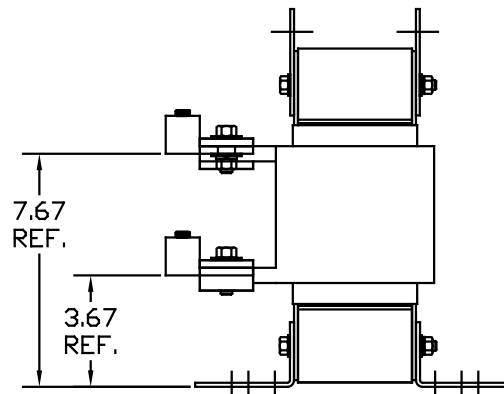
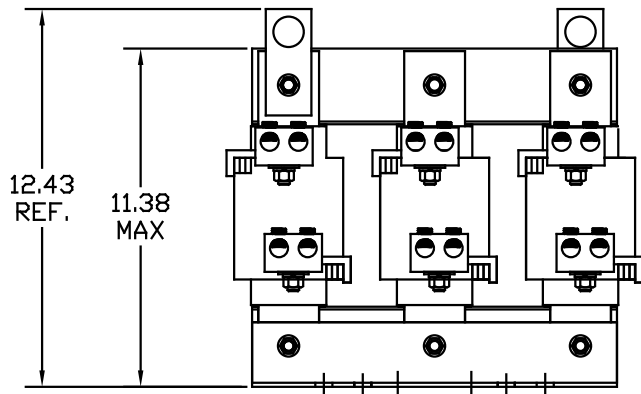


CATALOG NO	VOLTS(V.)	__mH±10%	__AMPS(A)	APPROX WT-LBS
KLRUL360CPT	24.0	.102	360	171

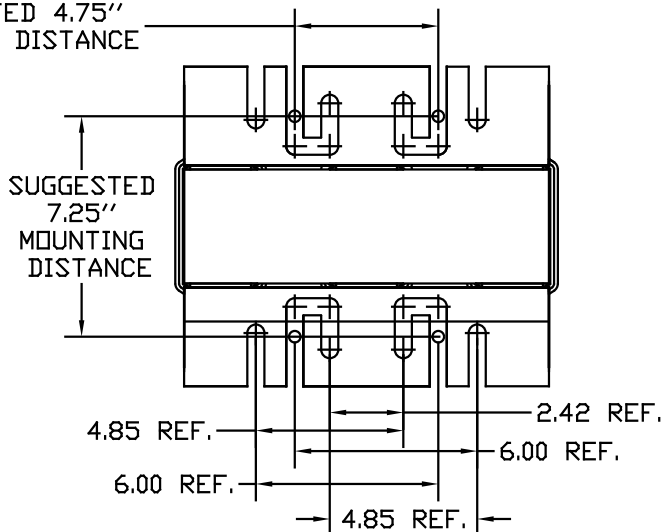


TCI TRANS-COIL, INC MILWAUKEE WI WWW.transcoil.com 800-824-8282	Performance and Protection for Drives.		
	KLR Series Line Reactor CATALOG# _____ 3PH, 60Hz, 600V Max, _____ Amps 40C Amb Max, 155C Rise Terminal Torque _____ LB-IN.		

LUG WIRE RANGE TWO 350MCM-4, AL. OR CU.
FOR REACTOR.
TIGHTENING TORQUE. 275 LB-IN



SUGGESTED 4.75" MOUNTING DISTANCE



				TOLERANCES EXCEPT AS NOTED: DECIMAL .XX ±.03 .XXX ±.01 FRACTIONAL ± 1/32 ANGULAR ± 1/2°		TCI 7878 N. 86th STREET MILWAUKEE, WI 53224	
				KLRUL OPEN, (FRAME S) LINE REACTOR		Dwg. No. KLRULOPEN-28DG Sht. 1 of 1	
NO.	REVISION	DATE	BY	SCALE TO FIT	DSW 05/13/04 APPROV		