

CATALOG NO	VOLTS(V.)	__mH-±10%	__AMPS(A)	APPROX WT-LBS
KLRUL360BPT	7.20	.031	360	80
KLRUL360FPT	8.62	.037	360	80

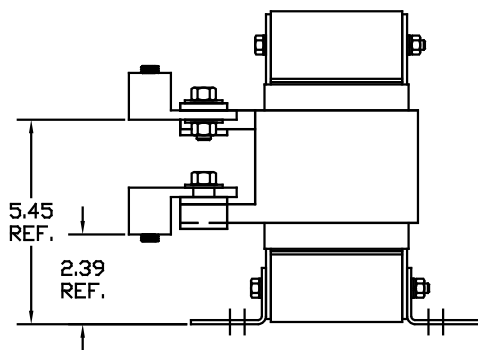
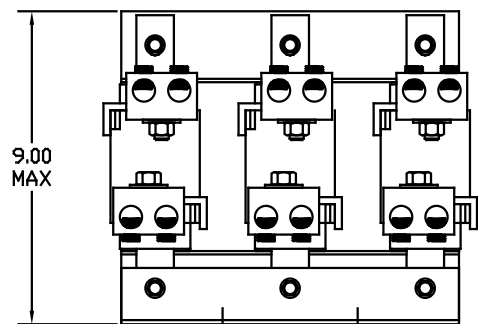
TCI Performance and Protection for Drives.

KLR Series Line Reactor

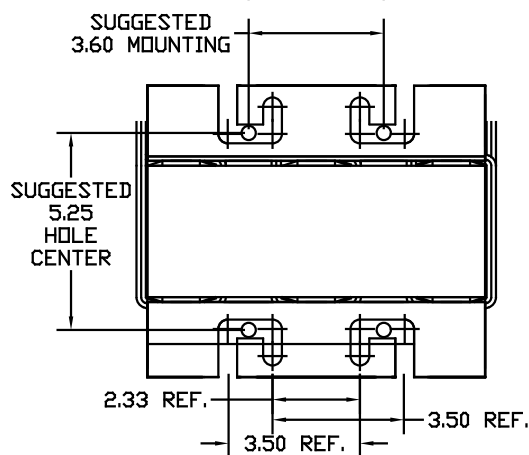
TRANS-COIL, INC
MILWAUKEE WI
WWW.transcoil.com
800-824-8282

CATALOG# _____
3PH, 60Hz, 600V Max, _____ Amps
40C Amb Max, 155C Rise
Terminal Torque _____ LB-IN

UL US LISTED



LUG WIRE RANGE TWO 350MCM-4, AL. OR CU.
FOR REACTOR.
TIGHTENING TORQUE. 275 LB-IN



TOLERANCES EXCEPT AS NOTED:				7878 N. 86th STREET MILWAUKEE, WI 53224
DECIMAL	.XX ± .03			
FRACTIONAL	.XXX ± .01			
ANGULAR	± 1/32			
NO	REVISION	DATE	BY	DSW 05/13/04 TO FIT

**KLRUL OPEN (FRAME J)
LINE REACTOR**

NO. _____ DATE _____ BY _____
SCALE TO FIT

7878 N. 86th STREET
MILWAUKEE, WI 53224

KLRULOPEN-26DG
SHT. 1 OF 1