

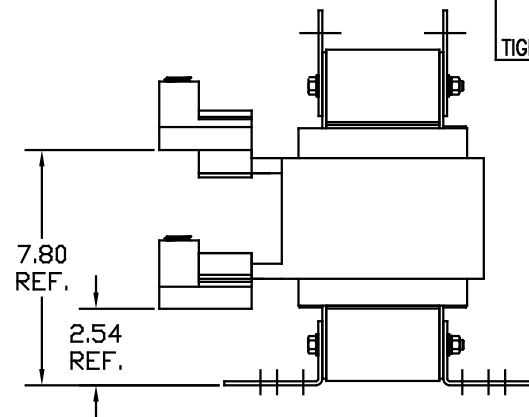
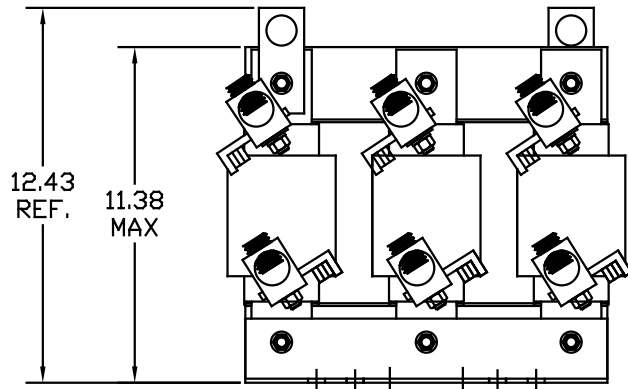
CATALOG NO	VOLTS(V.)	__mH±10%	__AMPS(A)	APPROX WT-LBS
KLRUL300EPT	28.75	.147	300	165

TCI
 TRANS-COIL, INC
 MILWAUKEE WI
 WWW.transcoil.com
 800-824-8282

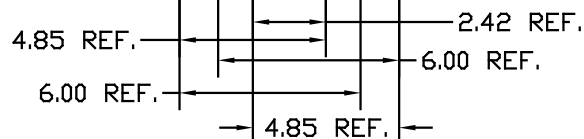
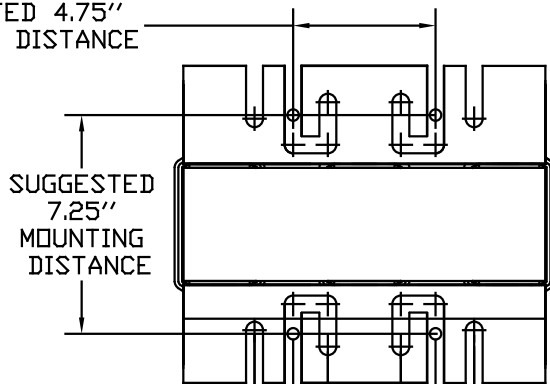
Performance and Protection for Drives.
KLR Series Line Reactor
 CATALOG# _____
 3PH, 60Hz, 600V Max, _____ Amps
 40C Amb Max, 155C Rise
 Terminal Torque _____ LB-IN.

LUG WIRE RANGE ONE 600MCM-4
 FOR REACTOR. TWO 250MCM-1/0, AL. OR CU.
 TIGHTENING TORQUE. 500 LB-IN

NOTE: LUGS ROTATED TO MEET CLEARANCE
 (PHASE TO PHASE),
 AND TO MEET CLEARANCE FROM LUGS
 TO GROUNDING SURFACE.



SUGGESTED 4.75"
 MOUNTING DISTANCE



				TOLERANCES EXCEPT AS NOTED:	 7878 N. 86th STREET MILWAUKEE, WI 53224
				DECIMAL	
				.XX ±.03 .XXX ±.01	
				FRACTIONAL ± 1/32	
				ANGULAR ± 1/2°	DATE BY 5/13/04 DSW SCALE TO FIT APPROVAL KLRULOPEN-25D/G NO. REVISION DATE BY SHT. 1 OF 1