

CATALOG NO	VOLTS(V.)	__mH±10%	__AMPS(A)	APPROX WT-LBS
KLRUL300CPT	24.0	.123	300	135

**TCI** Performance and Protection for Drives.

TRANS-COIL, INC  
MILWAUKEE WI  
WWW.transcoil.com  
800-824-8282

**KLR Series Line Reactor**

CATALOG# \_\_\_\_\_

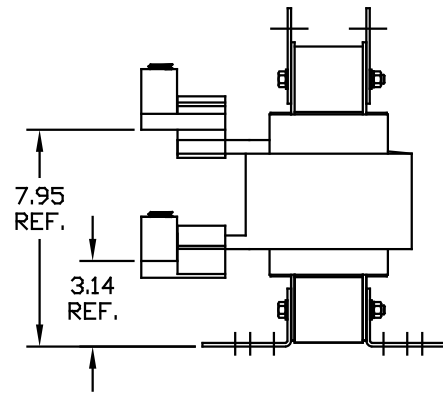
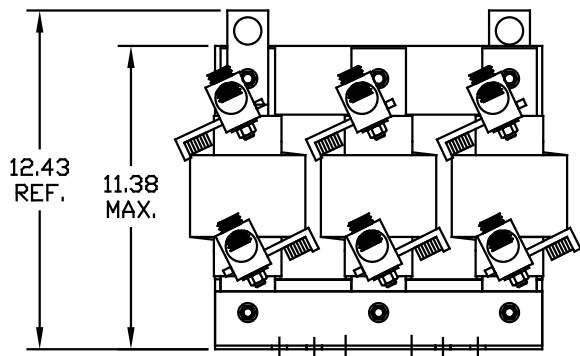
3PH, 60Hz, 600V Max, \_\_\_\_\_ Amps

40C Amb Max, 155C Rise

Terminal Torque \_\_\_\_\_ LB-IN.

UL US LISTED

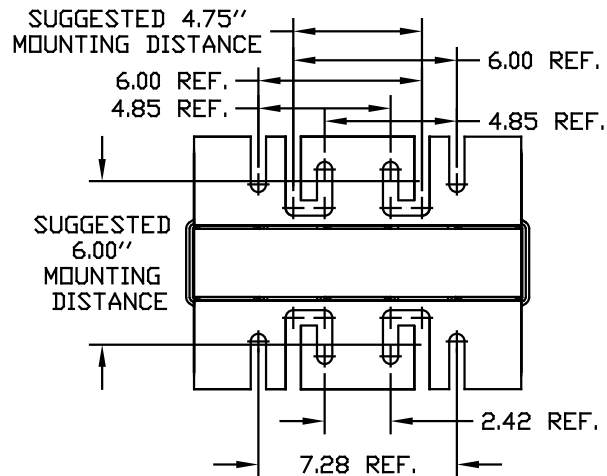
CE



LUG WIRE RANGE FOR REACTOR. ONE 600MCM-4  
TWO 250MCM-1/0, AL. OR CU.

TIGHTENING TORQUE. 500 LB-IN

NOTE: LUGS ROTATED TO MEET CLEARANCE (PHASE TO PHASE), AND TO MEET CLEARANCE FROM LUGS TO GROUNDING SURFACE.



				TOLERANCES EXCEPT AS NOTED:	<b>TCI</b> 7878 N. 86th STREET MILWAUKEE, WI 53224
				DIMENSIONAL	
				.XX ± .03	KLR UL OPEN, (FRAME L) LINE REACTOR
				.XXX ± .01	
				FRACTIONAL ± 1/32	DESIGNED BY DSW DATE 05/13/04 DWG. NO. KLRULOPEN-24DG
				ANGULAR ± 1/2°	SCALE TO FIT APPROVED BY C
NO	REVISION	DATE	BY		SHT. 1 OF 1