

CATALOG NO	VOLTS(V.)	__mH±10%	__AMPS(A)	APPROX WT-LBS
KLRUL300BPT	7.20	.037	300	66
KLRUL300FPT	8.62	.044	300	66

**TCI** Performance and Protection for Drives.

TRANS-COIL, INC  
MILWAUKEE WI  
WWW.transcoil.com  
800-824-8282

**KLR Series Line Reactor**

CATALOG# \_\_\_\_\_

3PH, 60Hz, 600V Max, \_\_\_\_\_ Amps

40C Amb Max, 150C Rise

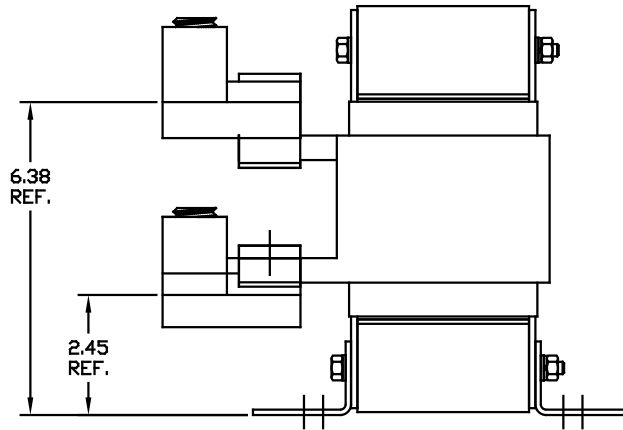
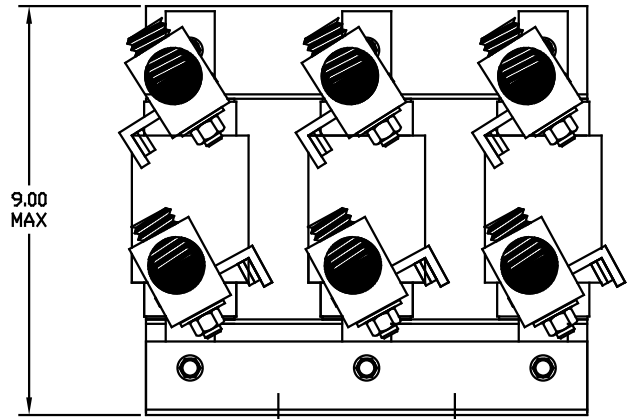
Terminal Torque \_\_\_\_\_ LB-IN

UL LISTED

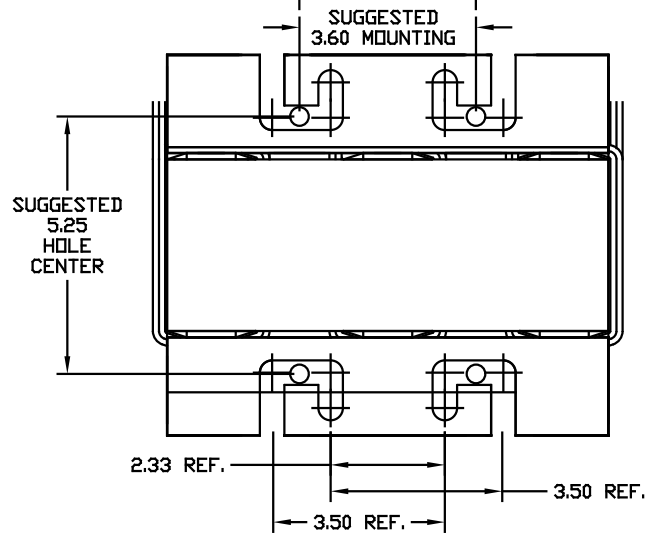
CE

A1 A2 B1 B2 C1 C2

LUG WIRE RANGE ONE 600MCM-4  
FOR REACTOR. TWO 250MCM-1/0, AL. OR CU.  
TIGHTENING TORQUE. 500 LB-IN



NOTE: LUGS ROTATED TO MEET CLEARANCE (PHASE TO PHASE).  
AND TO MEET CLEARANCE FROM LUGS TO GROUNDING SURFACE.



				TOLERANCES EXCEPT AS NOTED:	<b>TCI</b> 7878 N. 86th STREET MILWAUKEE, WI 53224
				DECIMAL .XX ±.03 .XXX±.010	
				FRACTIONAL ± 1/16	KLR UL, OPEN (FRAME J) LINE REACTOR
				ANGULAR ± 1/2°	
NO	REVISION	DATE	BY	SCALE 1/2"=1"	DSW 05/13/04 KLRULOPEN-23DG SHT.1 OF 1