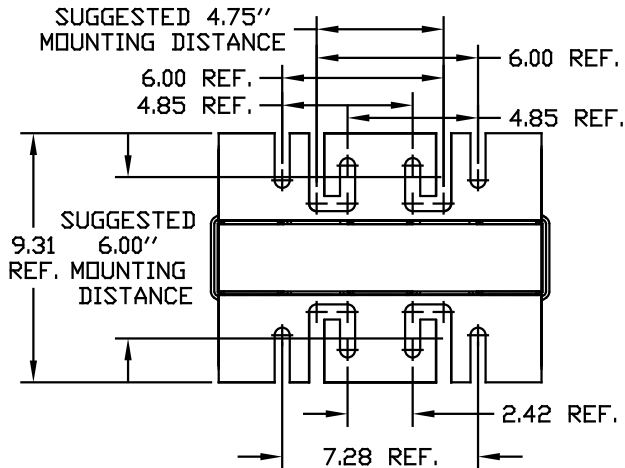
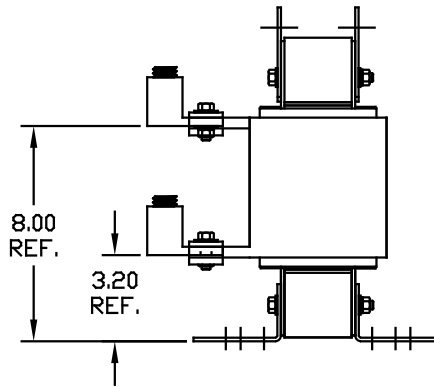
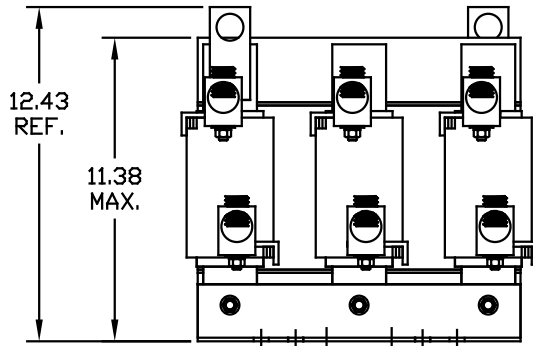
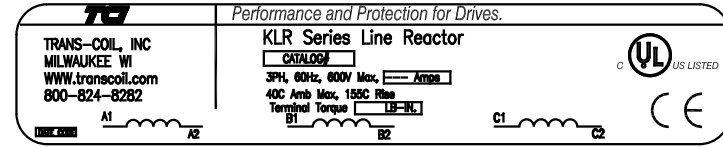


CATALOG NO	VOLTS(V.)	__mH±10%	__AMPS(A)	APPROX WT-LBS
KLRUL250CPT	24.0	.147	250	125
KLRUL250EPT	28.75	.176	250	125



LUG WIRE RANGE ONE 600MCM-4  
 FOR REACTOR. TWO 250MCM-1/0, AL. OR CU.  
 TIGHTENING TORQUE. 500 LB-IN

HI-POT VOLT	VAC
STRIP 2.40	2650
2.50 STACK	468-2

TOLERANCES EXCEPT AS NOTED:				7878 N. 86th STREET MILWAUKEE, WI 53224
DECIMAL	FRACTIONAL	ANGULAR	SCALE	
XX ± .03				<b>KLR UL OPEN (FRAME L) LINE REACTOR</b>
.XXX ± .01				
	± 1/32			DSG BY DSW DATE 05/12/04 DWG. NO. KLRULOPEN-21DG SCALE TO FIT APPROVAL SHI.1 OF 1
	± 1/2°			
NO	REVISION	DATE	BY	