

TCI Performance and Protection for Drives.

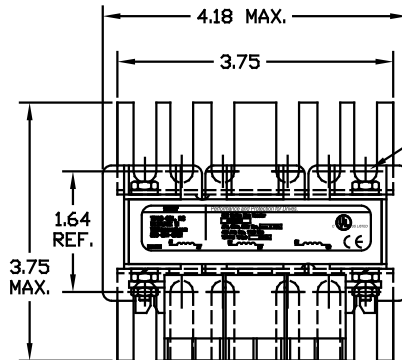
TRANS-COIL, INC.
MILWAUKEE, WI
www.transcoil.com
800-624-6262

UL LISTED

UL

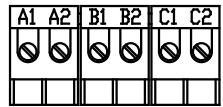
CE

UL Series Line Reactor
3PH, 480V, 600V Max. 100% A.M.C.
400 Amp Max. 115C Amp
Terminal Temp. 115C



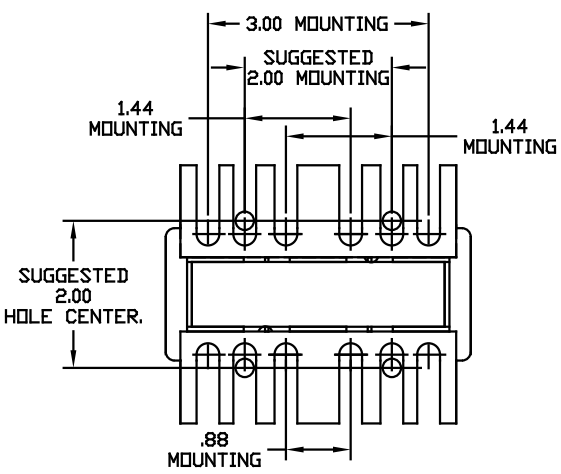
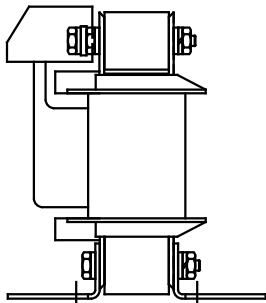
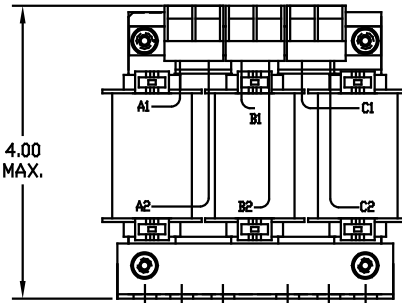
.31" WIDE SLOT

BLOCK WIRE RANGE #12-#18 AWG
FOR REACTOR AND
TIGHTENING TORQUE. 10 LB-IN



TERMINAL BLK MARKING

NOTE: A1, A2, B1, B2, C1, C2,
MARKINGS ON COIL AND TERMINAL BLOCK
FOR REFERENCE ONLY.



CATALOG NO	VOLTS(V.)	__mH±10%	__AMPS(A)	APPROX WT-LBS
KLRUL2ATB	14.40	11.03	2	4
KLRUL2BTB	7.20	5.51	2	4
KLRUL2CTB	24.00	18.38	2	4
KLRUL2DTB	17.25	13.21	2	4
KLRUL2ETB	28.75	22.02	2	4
KLRUL2FTB	8.62	6.60	2	4
KLRUL3ATB	14.40	7.35	3	4
KLRUL3BTB	7.20	3.68	3	4
KLRUL3CTB	24.00	12.25	3	5
KLRUL3DTB	17.25	8.81	3	4
KLRUL3ETB	28.75	14.70	3	4
KLRUL3FTB	8.62	4.40	3	4
KLRUL4ATB	14.40	5.51	4	4
KLRUL4BTB	7.20	2.76	4	4
KLRUL4CTB	24.00	9.19	4	5
KLRUL4DTB	17.25	6.61	4	4
KLRUL4ETB	28.75	11.00	4	4
KLRUL4FTB	8.62	3.30	4	4
KLRUL6ATB	14.40	3.68	6	5
KLRUL6BTB	7.20	1.84	6	4
KLRUL6DTB	17.25	4.40	6	5
KLRUL6FTB	8.62	2.20	6	5
KLRUL8ATB	14.40	2.76	8	5
KLRUL8BTB	7.20	1.38	8	4
KLRUL8FTB	8.62	1.65	8	4
KLRUL12BTB	7.20	.919	12	4
KLRUL12FTB	8.62	1.10	12	4

				TOLERANCES EXCEPT AS NOTED		TCI 7878 N. 86th STREET MILWAUKEE, WI 53224
				XX ± .03 .XXX ± .010		
				FRACTIONAL ± 1/16		KLRUL OPEN (FRAME A) LINE REACTOR
				ANGULAR ± 1/2°		
NO	REVISION	DATE	BY	DRG. BY DSW	DATE 05/05/04	DRG. NO. C KLRULOPEN-1DG
				SCALE 3/4"=1"	APPROV.	SHT. 1 OF 1