

CATALOG NO	VOLTS(V.)	__mH±10%	__AMPS(A)	APPROX WT-LBS
KLRUL200CPT	24.00	.184	200	116
KLRUL200EPT	28.75	.220	200	116

TCI Performance and Protection for Drives.

TRANS-COIL, INC
MILWAUKEE WI
WWW.transcoil.com
800-824-8282

KLR Series Line Reactor

CATALOG# _____

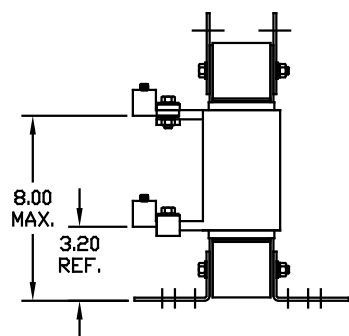
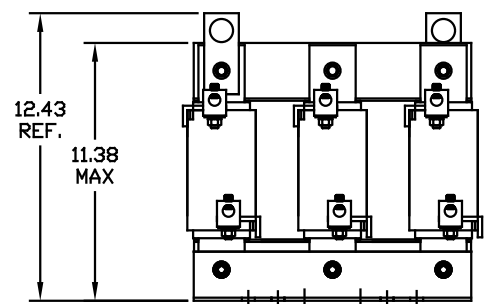
3PH, 60Hz, 600V Max. _____ Amps

40C Amb Max, 155C Rise

Terrnial Torque _____ LB-IN

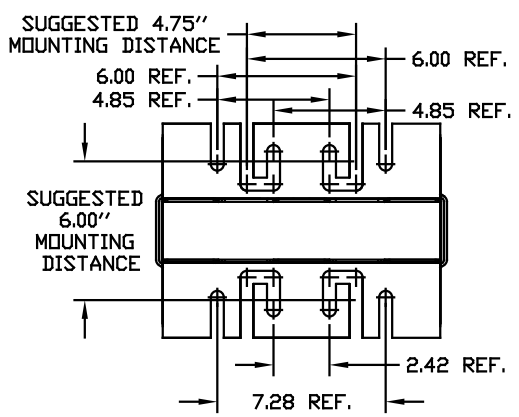
UL US LISTED

CE



LUG WIRE RANGE 250MCM-6, AL OR CU.
FOR REACTOR.

TIGHTENING TORQUE. 275 LB-IN



				TOLERANCES EXCEPT AS NOTED	<p>TCI 7878 N. 86th STREET MILWAUKEE, WI 53224</p> <p>KLRUL OPEN, (FRAME L) LINE REACTOR</p> <p>DRN BY DSW DATE 05/12/04 DWG NO. BDKLRULOPEN-18DG</p> <p>SCALE TO FIT APPRVD. SHT. 1 of 1</p>
				DECIMAL	
				.XX ± .03 .XXX ± .01	
				FRACTIONAL ± 1/32	
				ANGULAR ± 1/2°	
NO	REVISION	DATE	BY		