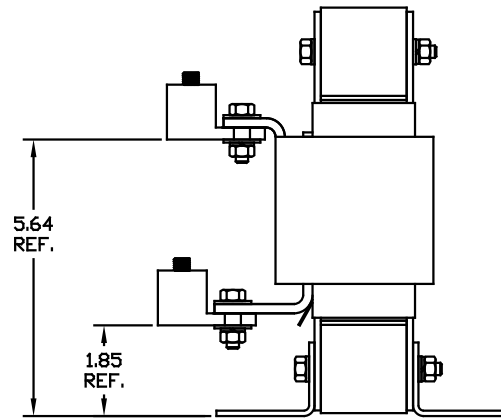
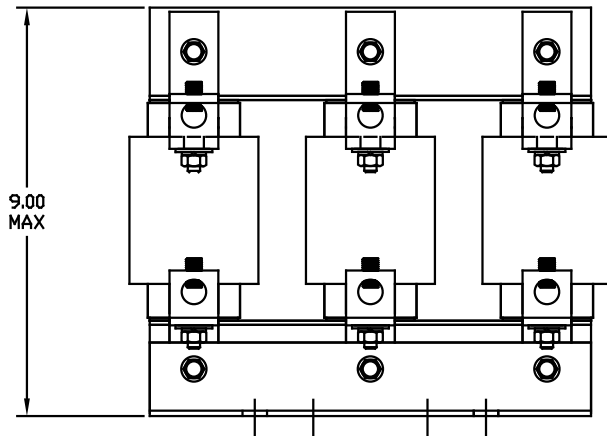
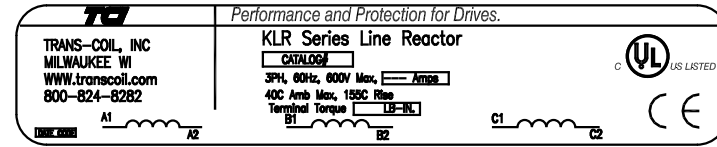
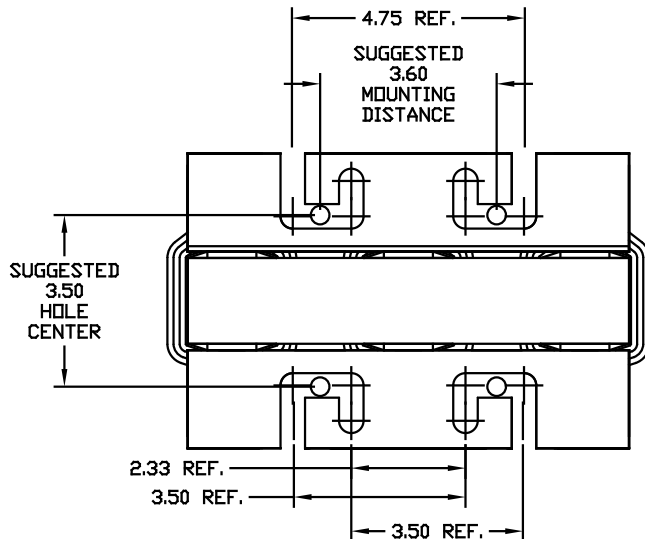


CATALOG NO	VOLTS(V.)	__mH±10%	__AMPS(A)	APPROX WT-LBS
KLRUL160BPT	7.20	.069	160	53
KLRUL160DPT	17.25	.165	160	53
KLRUL160FPT	8.62	.083	160	53



LUG WIRE RANGE 250MCM-6, AL OR CU.
FOR REACTOR.
TIGHTENING TORQUE. 275 LB-IN



				TOLERANCES EXCEPT AS NOTED:	7878 N. 86th STREET MILWAUKEE, WI 53224
				DECIMAL	
				.XX ±.03	KLRUL OPEN, (FRAME I) LINE REACTOR
				.XXX ±.01	
				FRACTIONAL ± 1/32	Dwg. BY DSW DATE 05/12/04 Dwg. No. KLRULOPEN-16DG SCALE 1/2"=1" APPROVA C
				ANGULAR ± 1/2°	
NO	REVISION	DATE	BY		SHT. 1 OF 1