

CATALOG NO	VOLTS(V.)	__mH-±10%	__AMPS(A)	APPROX WT-LBS
KLRUL160APT	14.4	.138	160	53

TCI Performance and Protection for Drives.

TRANS-COIL, INC
MILWAUKEE WI
WWW.transcoil.com
800-824-8282

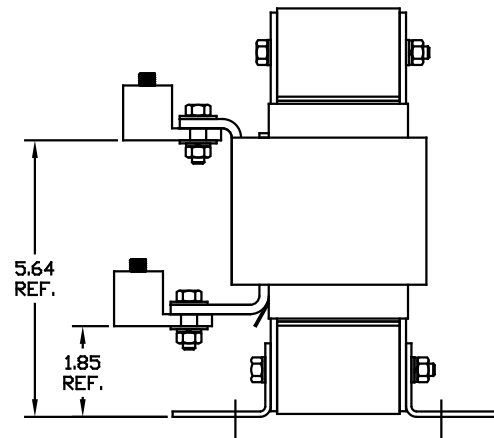
KLR Series Line Reactor

CATALOG# _____
3PH, 60Hz, 600V Max. _____ Amps
40C Amb Max, 155C Rise
Terminal Torque _____ LB-IN

UL US LISTED

AI A2 B1 B2 C1 C2

LUG WIRE RANGE 250MCM-6, AL OR CU.
FOR REACTOR.
TIGHTENING TORQUE. 275 LB-IN



				TOLERANCES EXCEPT AS NOTED:	TCI 7878 N. 86th STREET MILWAUKEE, WI 53224
				DECIMAL .XX ±.03 .XXX±.010	
				FRACTIONAL ± 1/16	KLRUL OPEN (FRAME G) LINE REACTOR
				ANGULAR ± 1/2°	
NO	REVISION	DATE	BY	DESIGNED BY DSW	DATE 05/10/04
				SCALE 1/2"=1"	DESIGNED BY C
				APPROVED	KLRULOPEN -13DGD
					SHT. 1 OF 1