

CATALOG NO	VOLTS(V.)	__mH-±10%	__AMPS(A)	APPROX WT-LBS
KLRUL110BPT	7.20	.100	110	29
KLRUL110FPT	8.62	.120	110	29

TCI Performance and Protection for Drives.

TRANS-COIL, INC
MILWAUKEE WI
WWW.transcoil.com
800-824-8282

KLR Series Line Reactor

CATALOG#

3PH, 60Hz, 600V Max, Amps

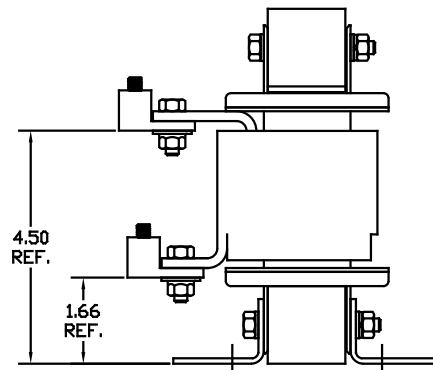
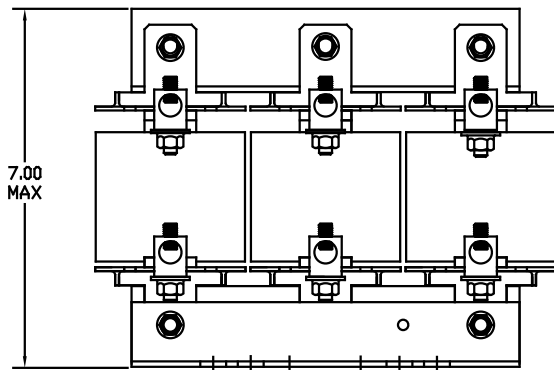
40C Amb Max, 115C Rise

Terminal Torque LB-IN

UL US LISTED

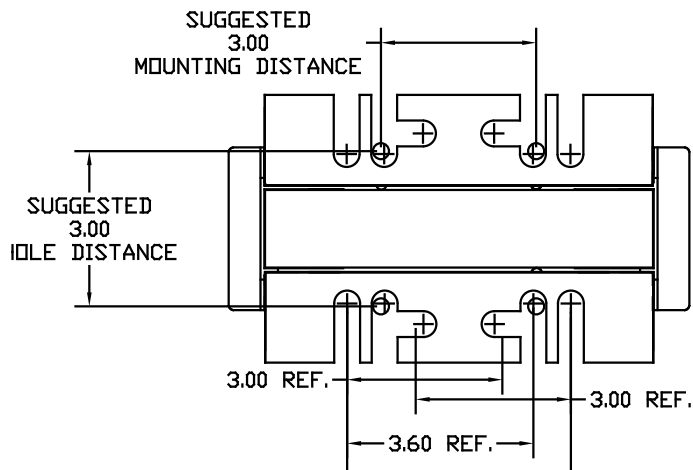
CE

A1 A2 B1 B2 C1 C2



LUG WIRE RANGE 2/0-6, AL OR CU.
FOR REACTOR.

TIGHTENING TORQUE. 120 LB-IN



TOLERANCES EXCEPT AS NOTED				7878 N. 86th STREET MILWAUKEE, WI 53224
NO	REVISION	DATE	BY	
				KLRUL OPEN (FRAME F) LINE REACTOR
				Dwg. No. 05/10/04 Scale TO FIT
				Part No. KLRULOPEN-11DG Sheet 1 of 1