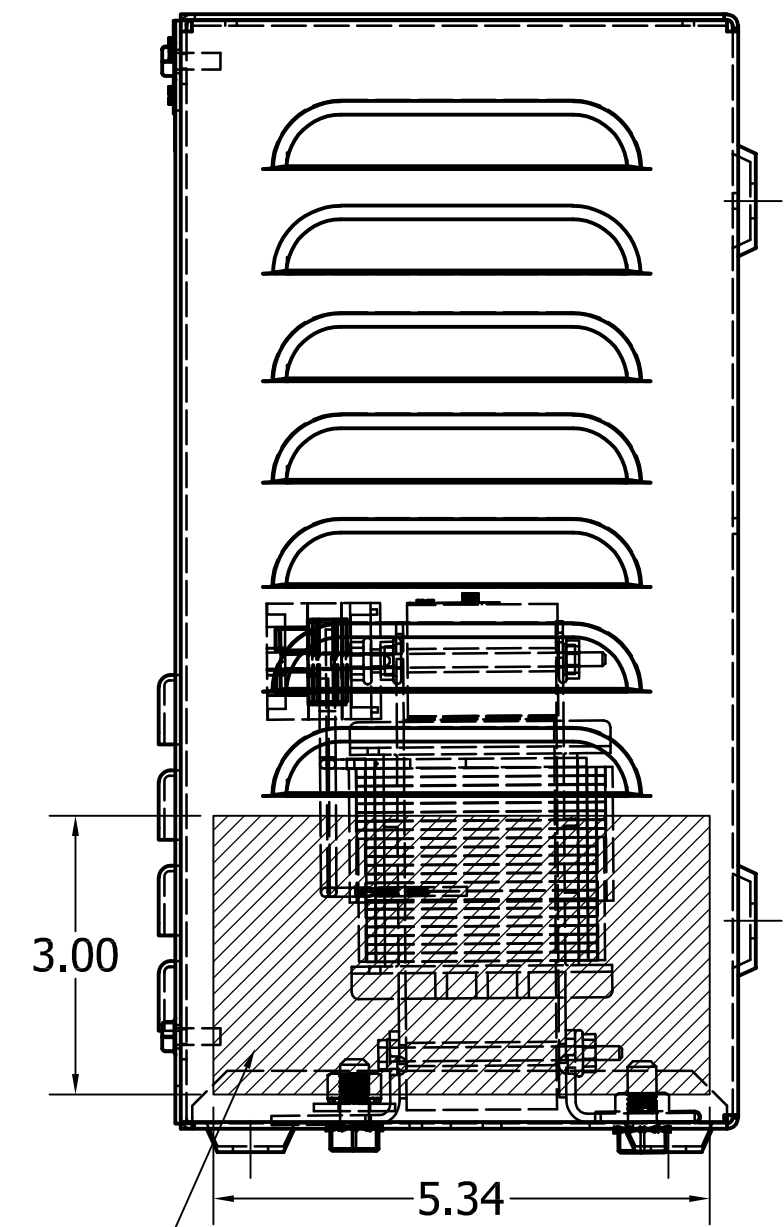
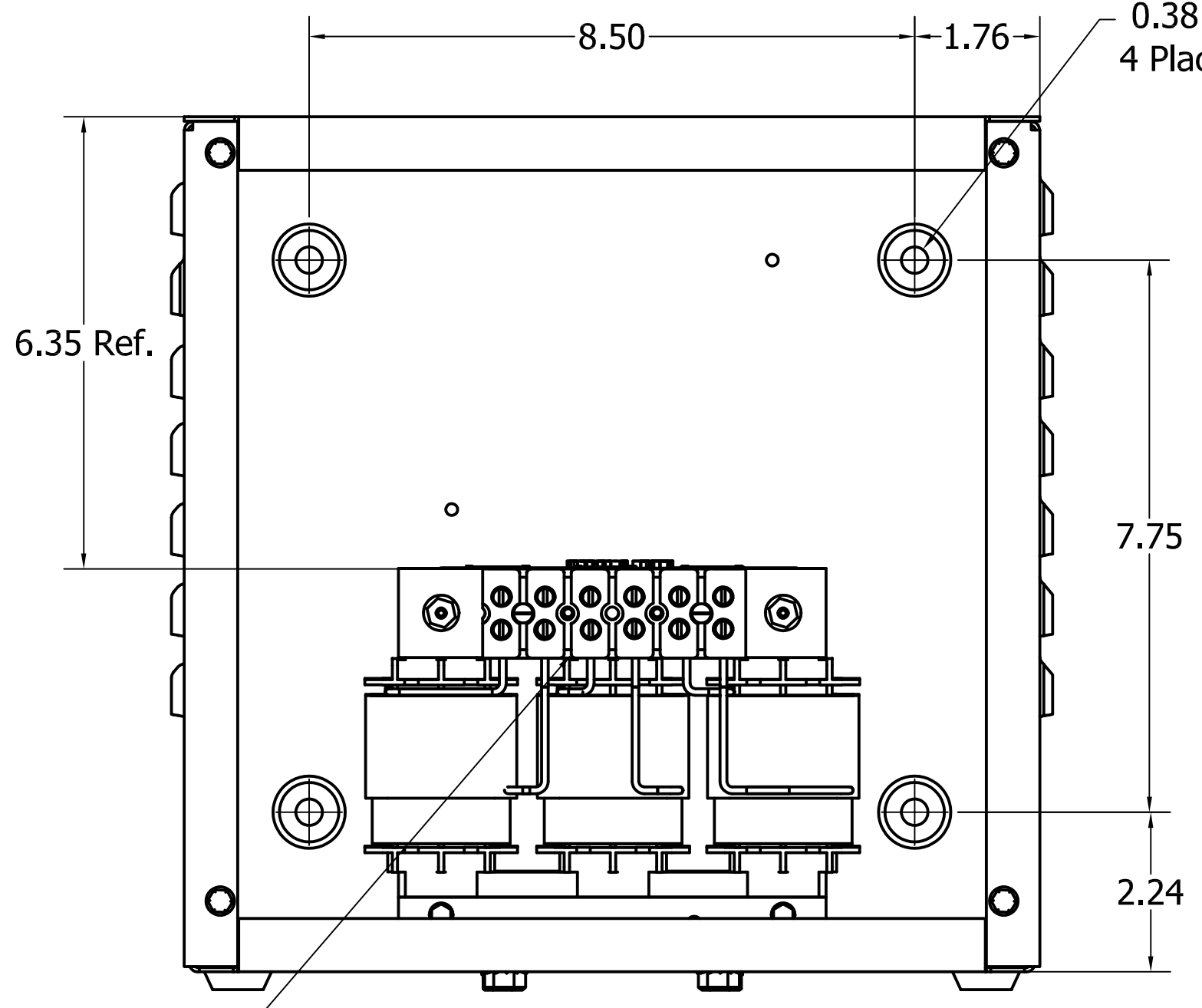
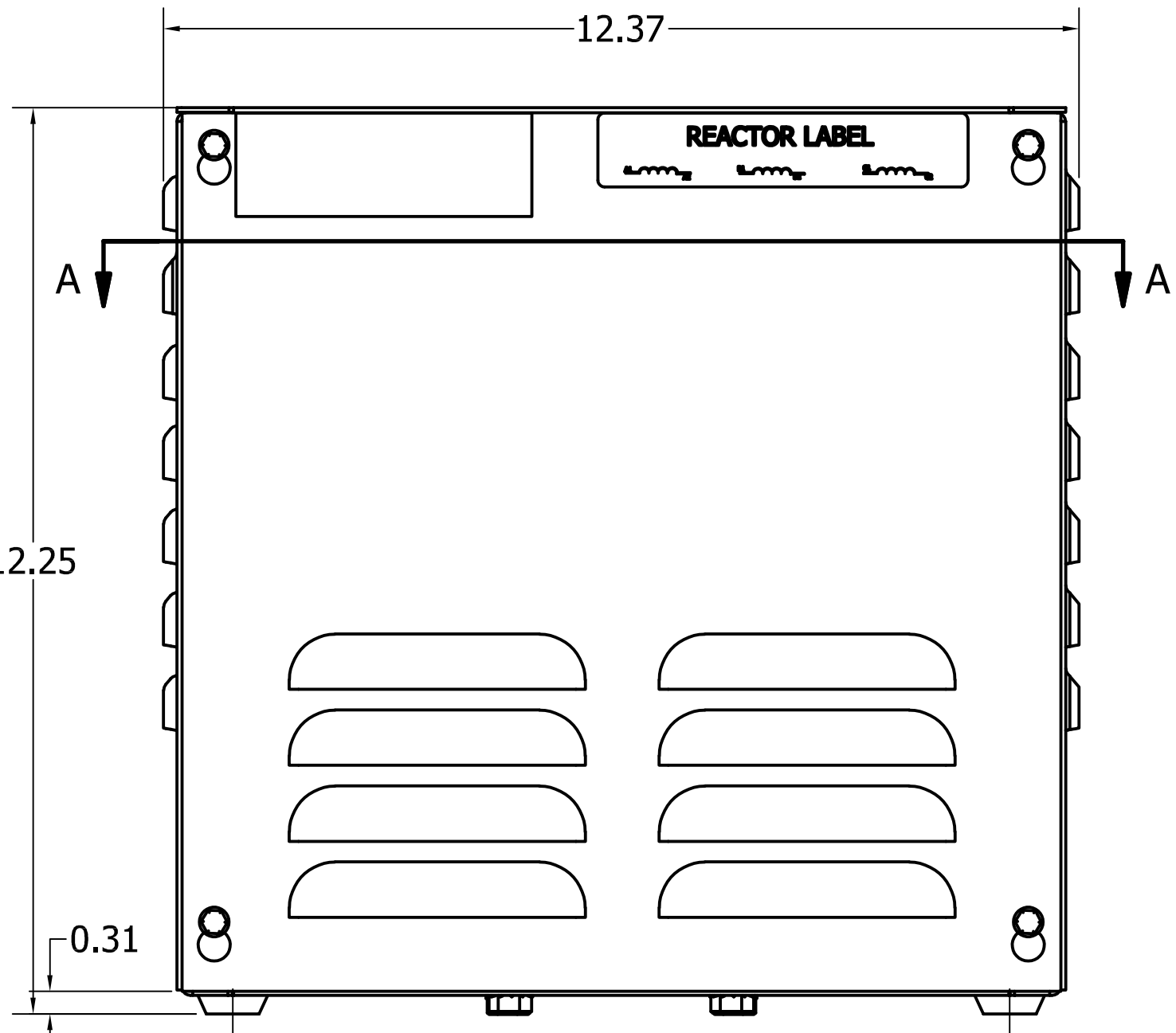


SECTION A-A

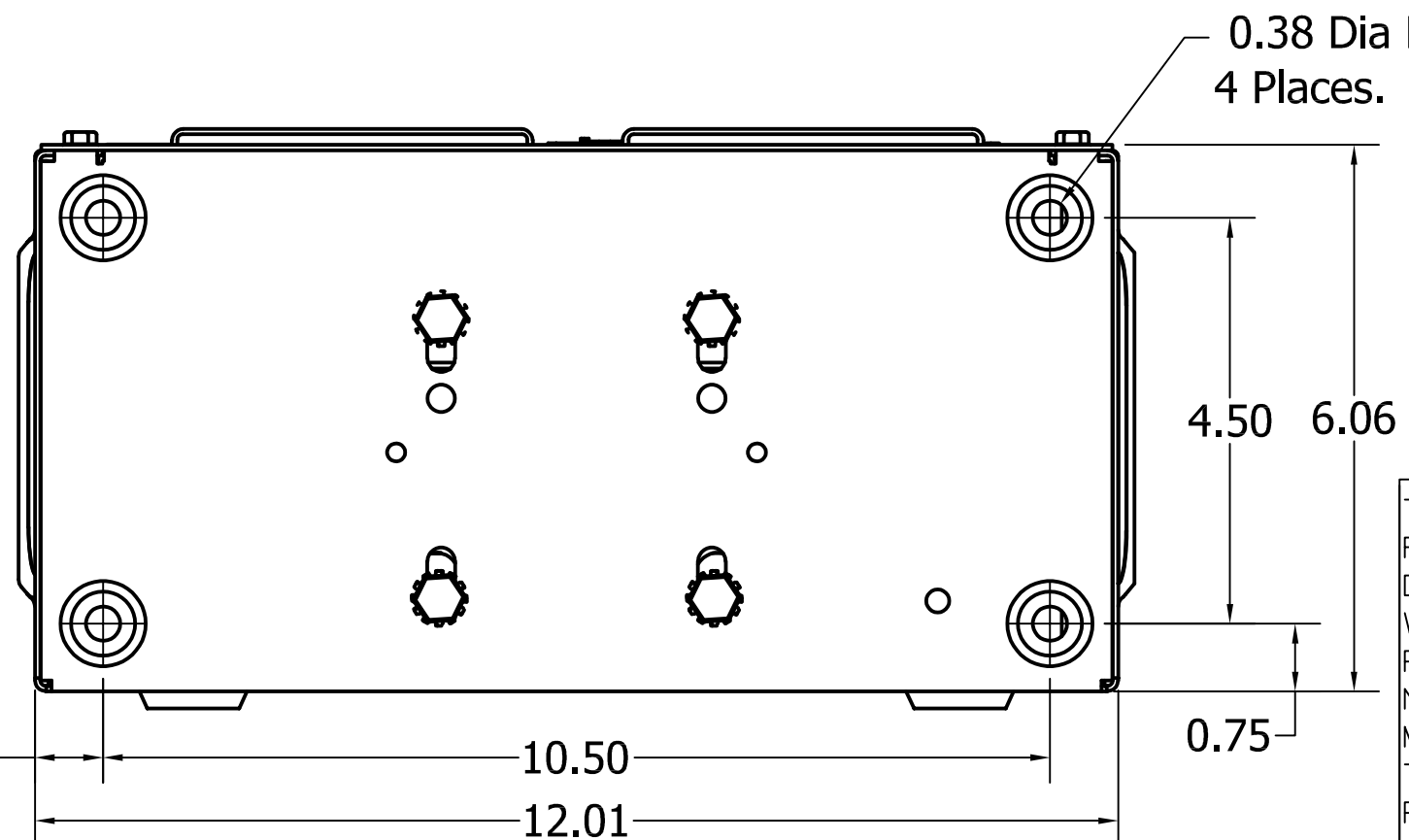
Customer Entrance
Top Of Enclosure.

TCI Part#	--Amps (A)	--mH +/-10%	Approx Weight (LBS)
KLRUL18ETBE01	18	2.44	27.5
KLRUL21CTBE01	21	1.75	27.5
KLRUL21ETBE01	21	2.10	27.5
KLRUL25CTBE01	25	1.47	27.5
KLRUL27CTBE01	27	1.36	27.5
KLRUL35DTBE01	35	0.755	26.5
KLRUL35ATBE01	35	0.63	26.5
KLRUL45ATBE01	45	0.49	26.5



Terminal Block Wire Range: 18 AWG to 4 AWG.
Tightening Torque: 20 IN-LBS

Customer Entrance
Either Side.



TCI, LLC CLAIMS PROPRIETARY RIGHTS IN THE MATERIAL HEREIN DISCLOSED. IT IS SUPPLIED WITHOUT PREJUDICE TO ANY PATENT RIGHTS OF TCI AND MAY NOT BE REPRODUCED OR USED TO MANUFACTURE ANYTHING SHOWN THEREIN WITHOUT WRITTEN PERMISSION FROM TCI.

NO	REVISION	DATE	BY	TOLERANCES (EXCEPT AS NOTED)
A	4226, Update Drawing, Mounting			DECIMAL .XX +/- .25 .XXX +/- .10
A	Hardware	12/4/17	DSW	FRACTIONAL +/- 1/16 ANGULAR +/- 1°

Customer Is Responsible For Installation to Meet All National And Local Electrical Codes.

Material(s) Shall be RoHS Compliant

TCI W132 N10611 Grant Drive
Germantown, WI. 53022

**KLRUL Frame (E)
Type 1 Enclosure.**

DRN. BY DSW	DATE 12/05/03	DWG. No. KLRULENCL-6DG
SCALE 29/64	APRVD.	SHEET 1 OF 1