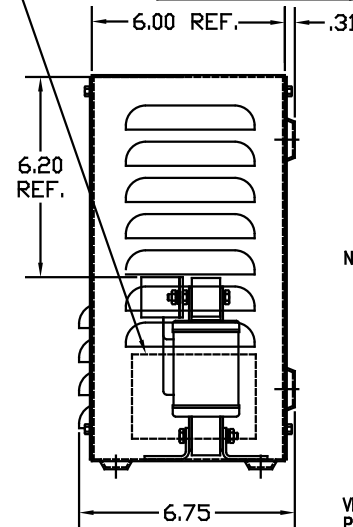
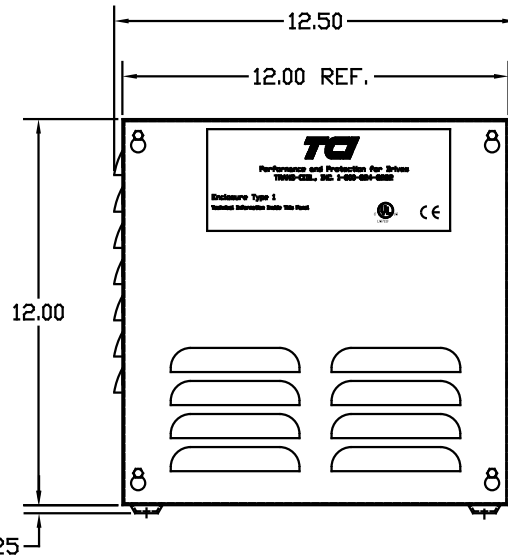
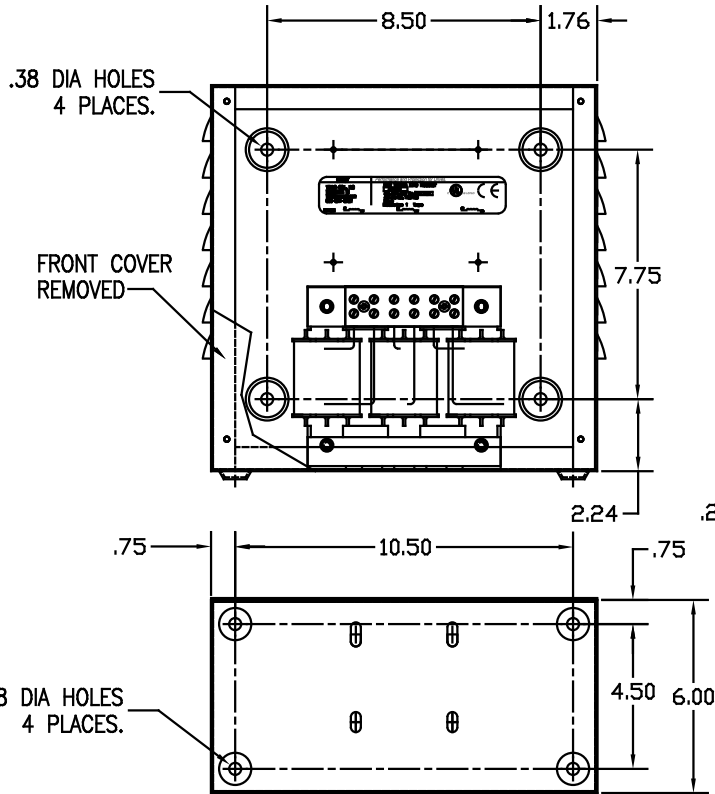


 TRANS-COIL, INC MILWAUKEE WI WWW.transcoil.com 800-824-8282	Performance and Protection for Drives. <b>KLR Series Line Reactor</b> CATALOG	
	3PH, 60Hz, 600V Max. <u>Amis</u> 40C Amb Max, 115C Rise Deg F: Enclosure type: 1 Torque:	

LABEL PLACED ON INSIDE WALL OF CABINET.

RECOMMENDED CONDUIT  
ENTRANCE AREA -  
TOP, LOWER LEFT SIDE, AND  
LOWER RIGHT SIDE.

CATALOG NO	VOLTS(V)	mH±10%	AMPS(A)	APPRX WT-LBS
KLRUL18BTBE01	7.20	.620	18	20.50
KLRUL18FTBE01	8.62	.734	18	20.50
KLRUL21BTBE01	7.20	.525	21	20.50
KLRUL21FTBE01	8.62	.629	21	20.50
KLRUL25BTBE01	7.20	.441	25	20.50
KLRUL25FTBE01	8.62	.528	25	20.50
KLRUL27BTBE01	7.20	.408	27	20.50
KLRUL27FTBE01	8.62	.489	27	20.50
KLRUL35BTBE01	7.20	.315	35	21.50
KLRUL35FTBE01	8.62	.377	35	21.50
KLRUL45BTBE01	7.20	.245	45	21.50
KLRUL45FTBE01	8.62	.294	45	21.50



TERMINAL BLK MARKING

BLOCK WIRE RANGE #18-#4 AWG  
FOR REACTOR AND  
TIGHTENING TORQUE. 20 LB-IN

NOTE: A1, A2, B1, B2, C1, C2,  
MARKINGS ON TERMINAL BLOCK  
FOR REFERENCE ONLY.

VENDOR LILLY POWDER COATINGS, INC.  
PRODUCT CODE 312E  
COLOR PEBBLE GRAY  
POWDER TYPE POLYESTER POLYURETHANE

PAINT SUITABLE FOR OUTDOOR APPLICATION PER UL TYPE 3R  
AND APPLIED PER A UL ACCEPTED DTV2 COATING PROGRAM.

TOLERANCES EXCEPT AS NOTED			
DECIMAL			
.XX ± .03			
.XXX ± .01			
FRACTIONAL			
± 1/32			
ANGULAR			
± 1/2°			
NO	REVISION	DATE	BY



7878 N. 86th STREET  
MILWAUKEE, WI 53224

KLR FRAME D (TERM BLOCK)  
TYPE 1 ENCLOSURE

DRN BY	DATE	DRG NO
DSW	12/05/03	B
SCALE	APPRV	
1/4"=1'		

KLRULENCL-5DG  
SHT.1 of 1