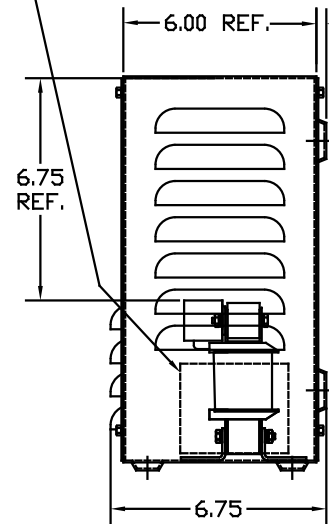
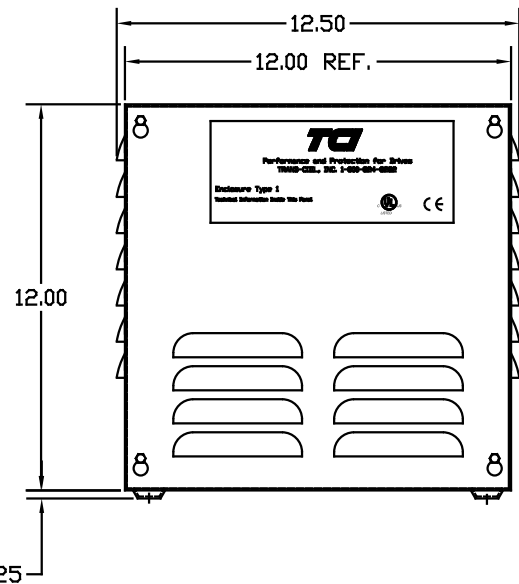
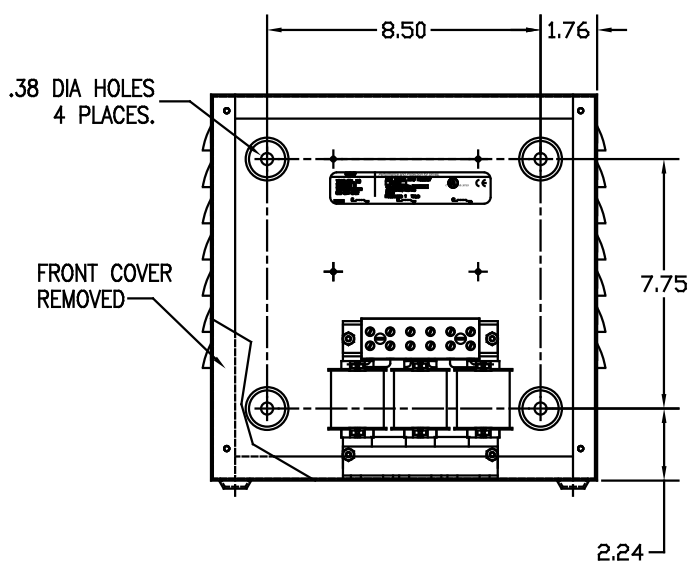


LABEL PLACED ON INSIDE WALL OF CABINET.

RECOMMENDED CONDUIT ENTRANCE AREA - TOP, LOWER LEFT SIDE, AND LOWER RIGHT SIDE.

CATALOG NO	VOLTS(V)	__mH-±10%	__AMPS(A)	APPROX WT-LBS
KLRUL16ATBE01	14.40	1.38	16	18.50
KLRUL16BTBE01	7.20	.689	16	17.50
KLRUL16DTBE01	17.25	1.65	16	18.50
KLRUL16FTBE01	8.62	.826	16	17.50



NOTE: A1, A2, B1, B2, C1, C2, MARKINGS ON TERMINAL BLOCK FOR REFERENCE ONLY.

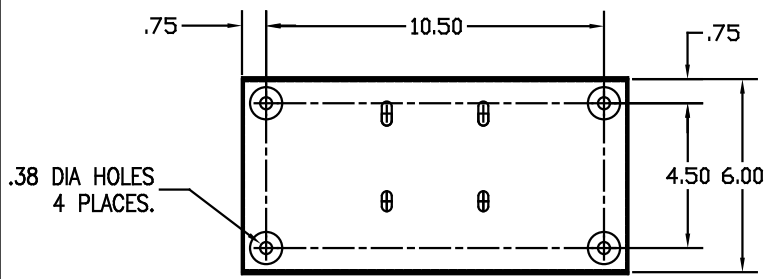


TERMINAL BLK MARKING

BLOCK WIRE RANGE #18-#4 AWG FOR REACTOR AND TIGHTENING TORQUE. 20 LB-IN

VENDOR LILLY POWDER COATINGS, INC.
 PRODUCT CODE 312E
 COLOR PEBBLE GRAY
 POWDER TYPE POLYESTER POLYURETHANE

PAINT SUITABLE FOR OUTDOOR APPLICATION PER UL TYPE 3R AND APPLIED PER A UL ACCEPTED DTV2 COATING PROGRAM.



CUSTOMER IS RESPONSIBLE FOR INSTALLATION TO MEET ALL LOCAL AND NATIONAL CODES

TOLERANCES EXCEPT AS NOTED			
DECIMAL			
.XX ± .03			
.XXX ± .01			
FRACTIONAL			
± 1/32			
ANGULAR			
± 1/2°			
NO	REVISION	DATE	BY

TCI 7878 N. 86th STREET MILWAUKEE, WI 53224

KLR FRAME B (TERM BLOCK) TYPE 1 ENCLOSURE

DRN BY **DSW** DATE **12/5/03** DWG NO. **B**
 SCALE **1/4"=1'** APPRVD. **B** **DKLRULENCL-4DG**
 SHT. 1 OF 1