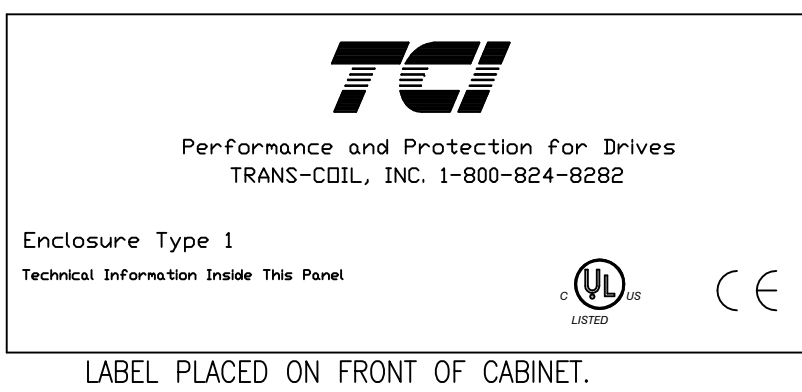
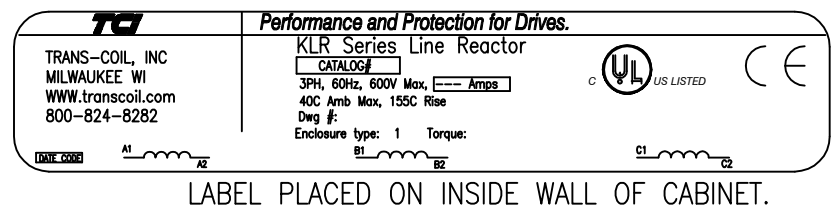
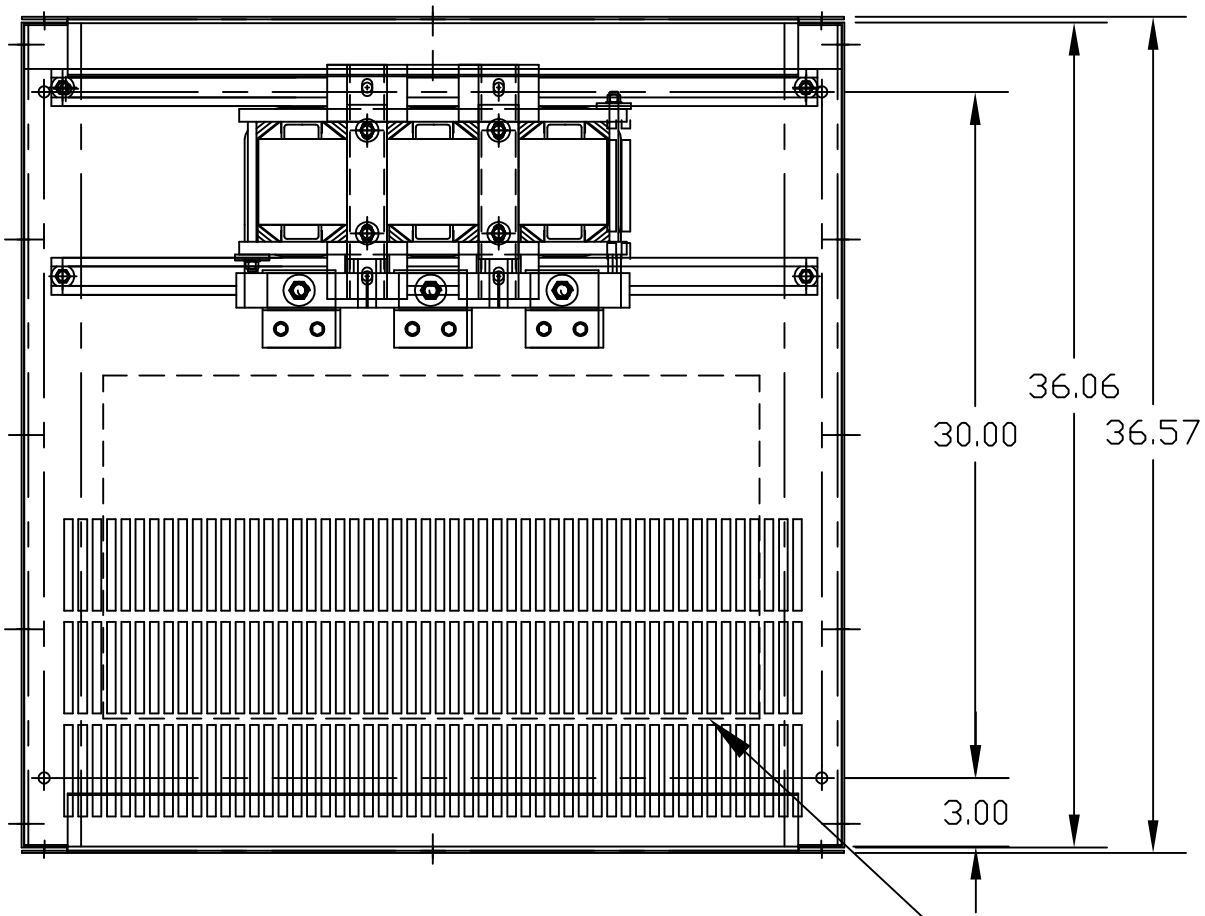
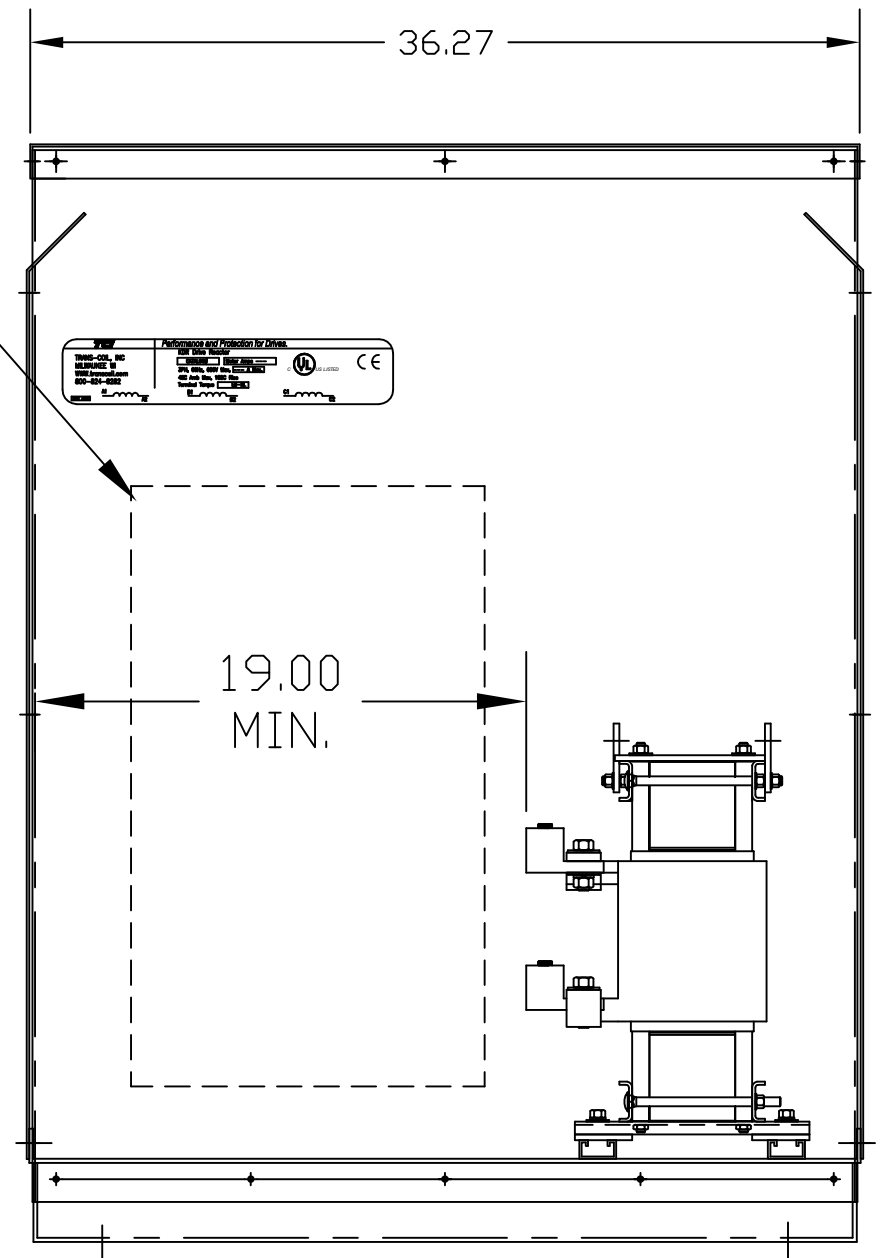
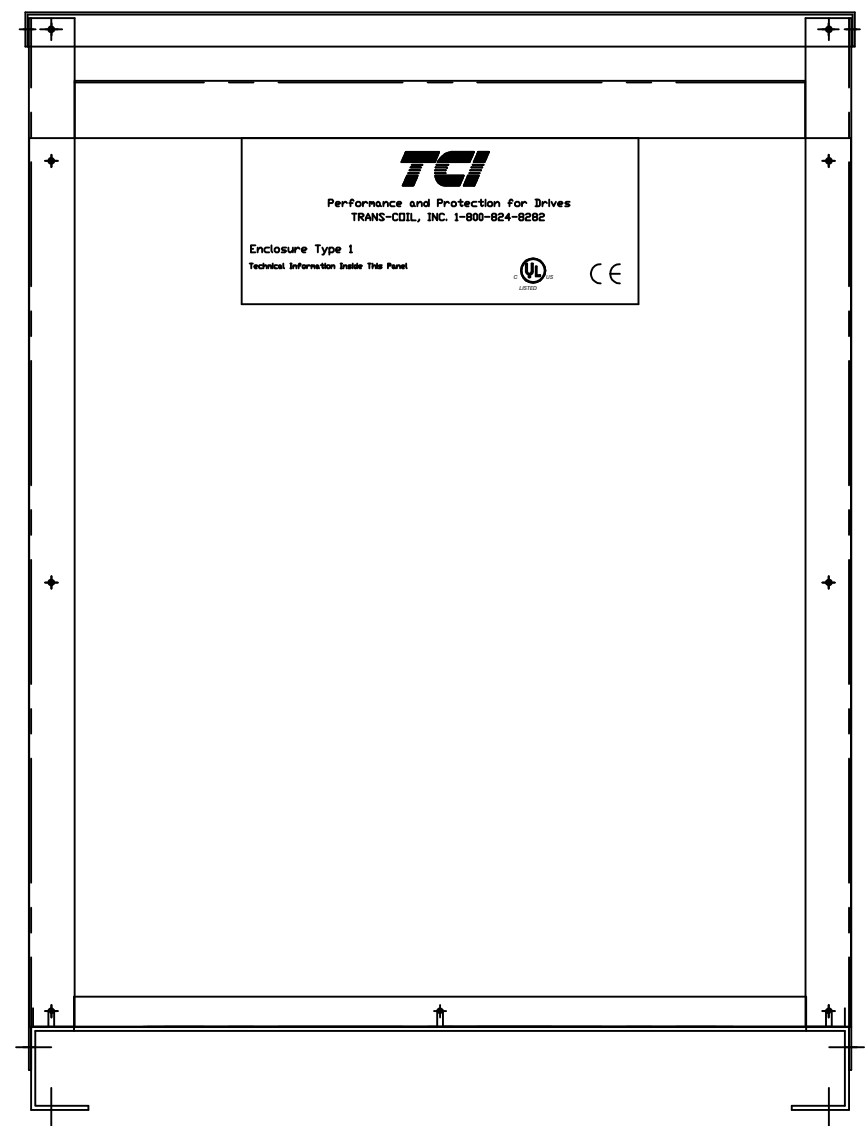
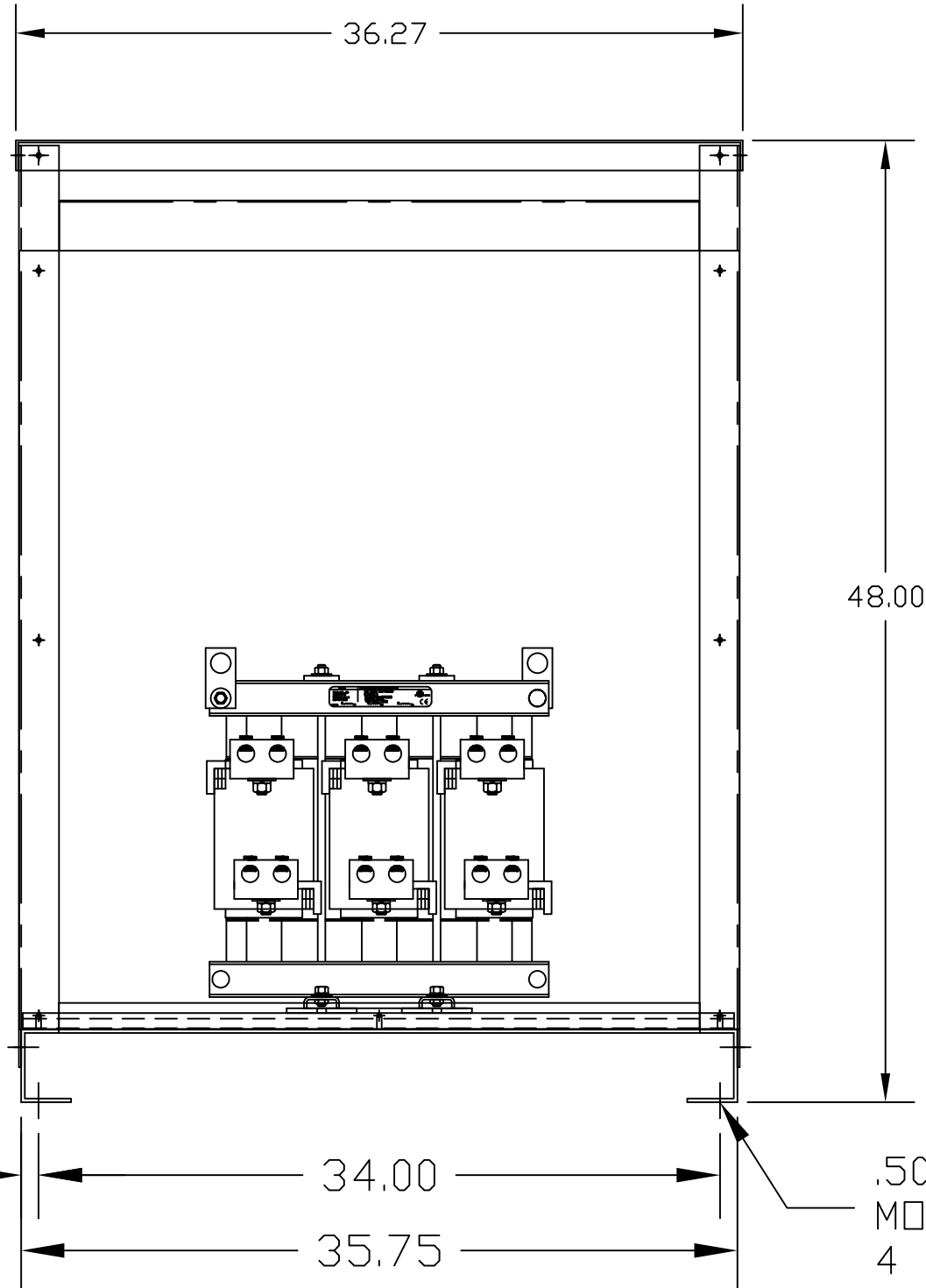


| CATALOG NO | VOLTS(V.) | __mH-±10% | __AMPS(A) | APPROX WT-LBS |
|-----------------|-----------|-----------|-----------|---------------|
| KLRUL750APTE01 | 14.4 | .029 | 750 | 600 |
| KLRUL750CPTE01 | 24.0 | .049 | 750 | 600 |
| KLRUL750DPTE01 | 17.24 | .035 | 750 | 595 |
| KLRUL750EPTTE01 | 28.74 | .059 | 750 | 600 |



LUG WIRE RANGE TWO 800MCM-300MCM, AL. OR CU.
FOR REACTOR.
TIGHTENING TORQUE. 375 LB-IN

RECOMMENDED CONDUIT
ENTRANCE AREA - LEFT FRONT SIDE,
BOTTOM FRONT. RIGHT FRONT SIDE AND
TOP.



CUSTOMER IS RESPONSIBLE FOR INSTALLATION
TO MEET ALL LOCAL AND NATIONAL CODES

VENDOR LILLY POWDER COATINGS, INC.
PRODUCT CODE 312E
COLOR PEBBLE GRAY
POWDER TYPE POLYESTER POLYURETHANE

PAINT SUITABLE FOR OUTDOOR APPLICATION PER UL TYPE 3R
AND APPLIED PER A UL ACCEPTED DTV2 COATING PROGRAM.

| TOLERANCES (EXCEPT AS NOTED) | | | | TCI W132 N10611 GRANT DRIVE GERMANTOWN, WI. 53022 | |
|---------------------------------|----------|------|------------|--|--|
| | | | DECIMAL | KLR FRAME X (ILSCO LUGS) TYPE 1 ENCLOSURE | |
| | | | .XX ± .03 | | |
| | | | .XXX ± .01 | | |
| | | | FRACTIONAL | DRN BY DSW DATE 07/06/04 DWG. NO. KLRULENCL-40DG | |
| | | | ± 1/32 | | |
| | | | ANGULAR | SCALE TO FIT APRVD. | |
| | | | ± 1/2° | | |
| NO | REVISION | DATE | BY | SHT.1 OF1 | |