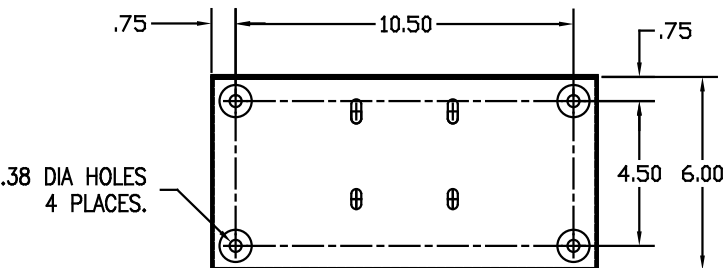
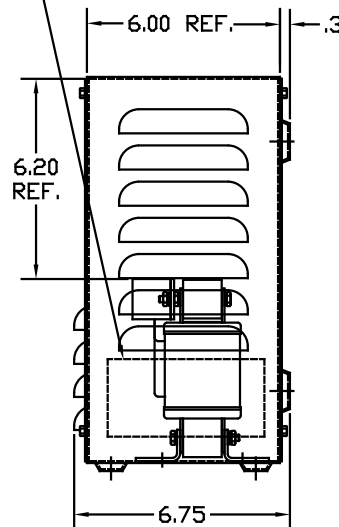
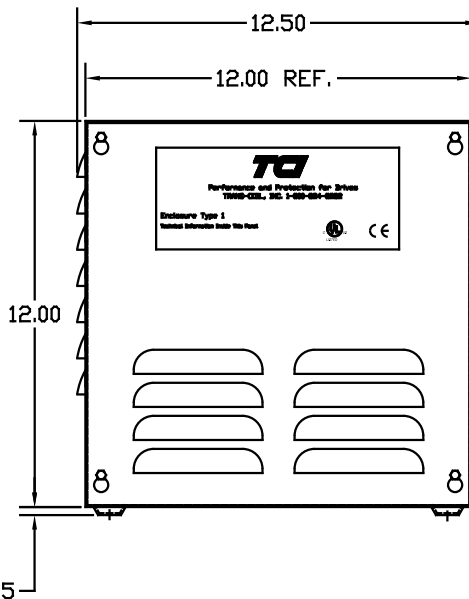
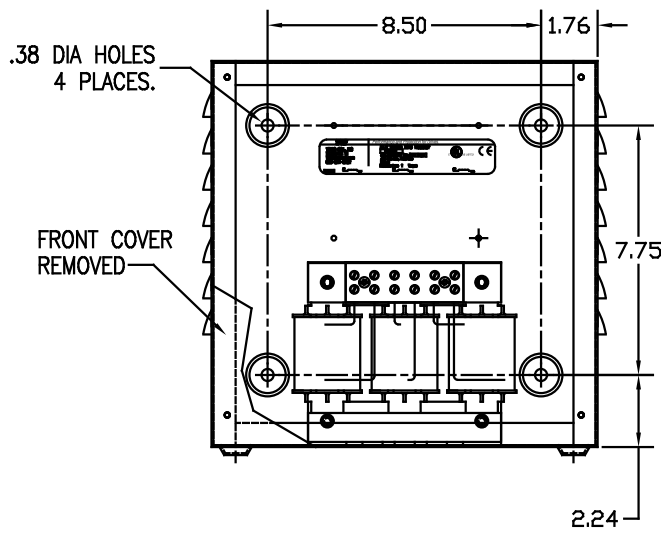


LABEL PLACED ON INSIDE WALL OF CABINET.

RECOMMENDED CONDUIT
ENTRANCE AREA -
TOP, LOWER LEFT SIDE, AND
LOWER RIGHT SIDE.



CUSTOMER IS RESPONSIBLE FOR INSTALLATION
TO MEET ALL LOCAL AND NATIONAL CODES

CATALOG NO	VOLTS(V _r)	mH ±10%	AMPS(A)	APPROX WT-LBS
KLRUL12ETBE01	28.75	3.67	12	18.50
KLRUL16CTBE01	24.00	2.30	16	23.50
KLRUL16ETBE01	28.75	2.75	16	23.50
KLRUL18ATBE01	14.40	1.23	18	22.50
KLRUL18CTBE01	24.00	2.04	18	22.50
KLRUL18DTBE01	17.25	1.47	18	22.50
KLRUL21ATBE01	14.40	1.050	21	23.50
KLRUL21DTBE01	17.25	1.26	21	23.50
KLRUL25ATBE01	14.40	.882	25	23.50
KLRUL25DTBE01	17.25	1.06	25	23.50
KLRUL27ATBE01	14.40	.817	27	23.50
KLRUL27DTBE01	17.25	.978	27	23.50
KLRUL55BTBE01	7.20	.200	55	22.50
KLRUL55FTBE01	8.62	.240	55	22.50

NOTE: A1, A2, B1, B2, C1, C2,
MARKINGS ON
TERMINAL BLOCK
FOR REFERENCE ONLY.



TERMINAL BLK MARKING

BLOCK WIRE RANGE	#18-#4 AWG
FOR REACTOR AND	
TIGHTENING TORQUE.	20 LB-IN

VENDOR LILLY POWDER COATINGS, INC.
PRODUCT CODE 312E
COLOR PEBBLE GRAY
POWDER TYPE POLYESTER POLYURETHANE

PAINT SUITABLE FOR OUTDOOR APPLICATION PER UL TYPE 3R
AND APPLIED PER A UL ACCEPTED DTW2 COATING PROGRAM.

TOLERANCES EXCEPT AS NOTED			
DECIMAL			
.XX ± .03			
.XXX ± .01			
FRACTIONAL			
± 1/32			
ANGULAR			
± 1/2°			
NO	REVISION	DATE	BY

TCI 8787 N. 86th STREET
MILWAUKEE, WI 53224

KLR (FRAME C) TERM BLOCK
TYPE 1 ENCLOSURE

DRN BY	DATE	DRG NO.
DSW	12/05/03	B
SCALE	APPRV.	
1/4"=1'		

KLRULENCL-3DG
SHT.1 of 1