

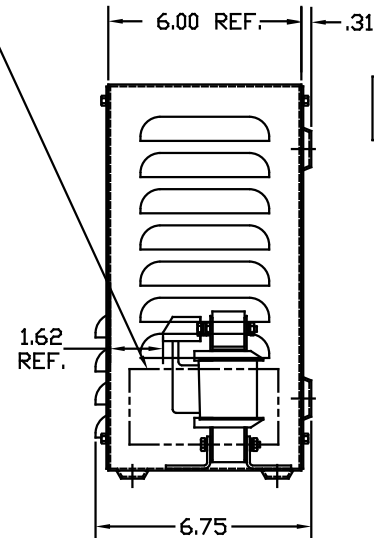
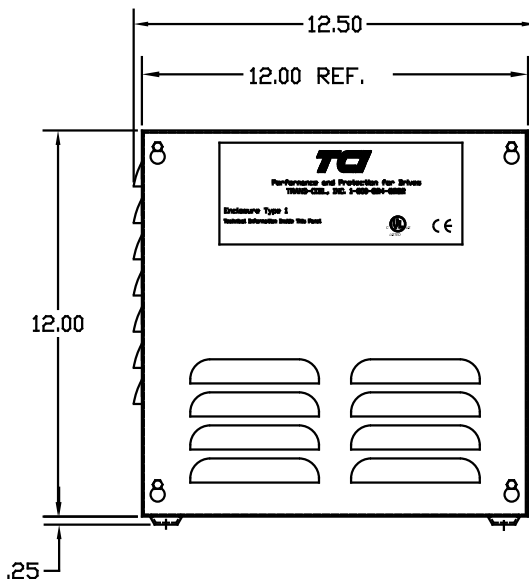
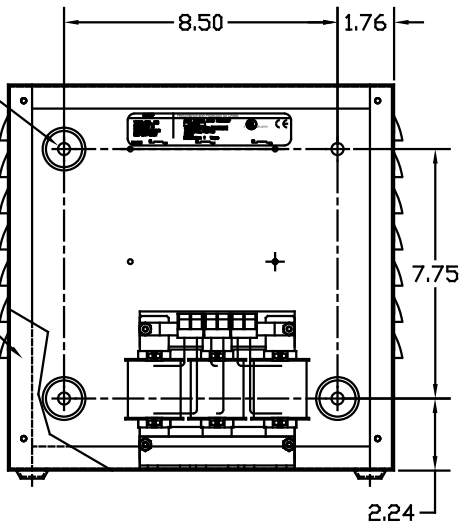
LABEL PLACED ON INSIDE WALL OF CABINET.

RECOMMENDED CONDUIT ENTRANCE AREA — TOP, LOWER LEFT SIDE, AND LOWER RIGHT SIDE.

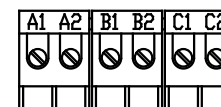
CATALOG NO	VOLTS(V)	__MH±10%	__AMPS(A)	APPROX WT-LBS
KLRUL6CTBE01	24.00	6.13	6	17.50
KLRUL6ETBE01	28.75	7.34	6	17.50
KLRUL8CTBE01	24.0	4.59	8	17.50
KLRUL8DTBE01	17.25	3.30	8	17.50
KLRUL8ETBE01	28.75	5.50	8	17.50
KLRUL12ATBE01	14.4	1.84	12	17.50
KLRUL12CTBE01	24.0	3.063	12	18.50
KLRUL12DTBE01	17.25	2.20	12	17.50

.38 DIA HOLES 4 PLACES.

FRONT COVER REMOVED



BLOCK WIRE RANGE #12-#18 AWG FOR REACTOR AND TIGHTENING TORQUE, 10 LB-IN



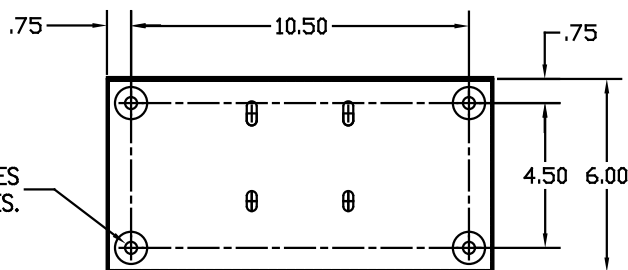
TERMINAL BLK MARKING

NOTE: A1, A2, B1, B2, C1, C2, TERMINAL BLOCK FOR REFERENCE ONLY.

PRODUCT CODE 312E  
COLOR PEBBLE GRAY  
POWDER TYPE POLYESTER POLYURETHANE

PAINT SUITABLE FOR OUTDOOR APPLICATION PER UL TYPE 3R AND APPLIED PER A UL ACCEPTED DTW2 COATING PROGRAM.

.38 DIA HOLES 4 PLACES.



CUSTOMER IS RESPONSIBLE FOR INSTALLATION TO MEET ALL LOCAL AND NATIONAL CODES

TOLERANCES EXCEPT AS NOTED			
DECIMAL			
.XX ± .03			
.XXX ± .01			
FRACTIONAL			
± 1/32			
ANGULAR			
± 1/2°			
NO	REVISION	DATE	BY

**TCI** 7878 N. 86th STREET MILWAUKEE, WI 53224

KLR FRAME B (TERM BLOCK) TYPE 1 ENCLOSURE

DRN BY DSW DATE 12/5/03 DWG NO. B KLRULENCL-2DG SCALE 1/4"=1" APPRVD. SHT. 1 of 1