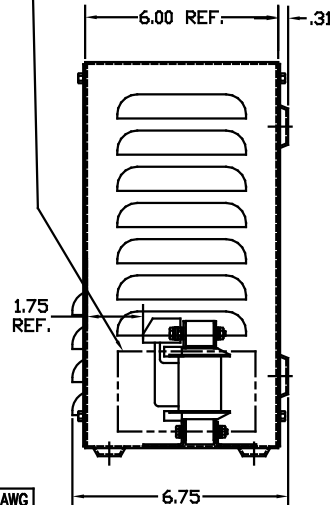
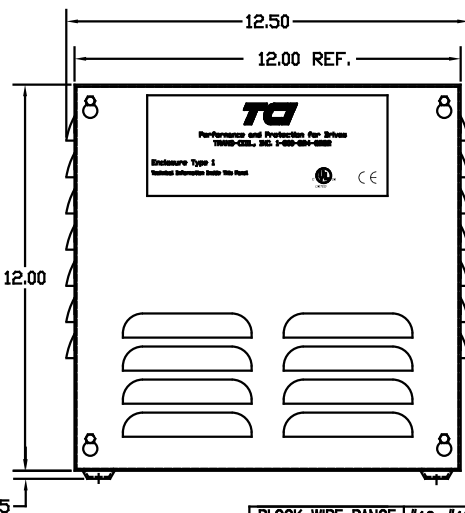
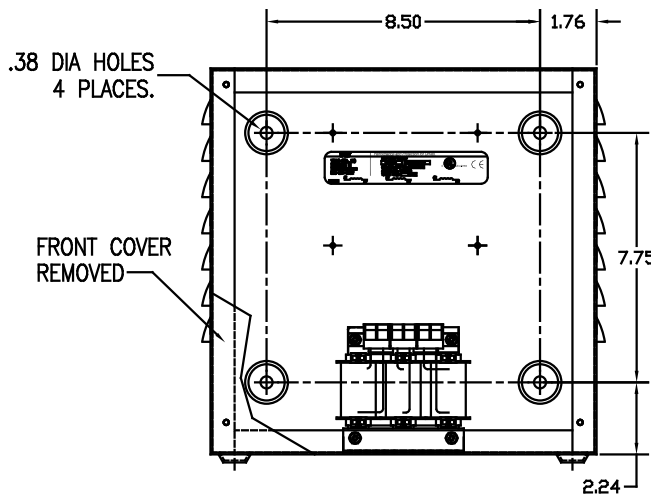
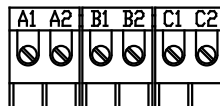


LABEL PLACED ON INSIDE WALL OF CABINET.

RECOMMENDED CONDUIT ENTRANCE AREA - TOP, LOWER LEFT SIDE, AND LOWER RIGHT SIDE.

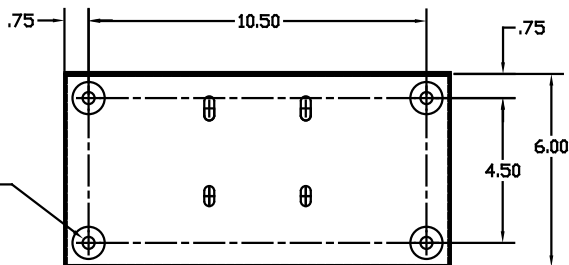


BLOCK WIRE RANGE #12-#18 AWG FOR REACTOR AND TIGHTENING TORQUE. 10 LB-IN



TERMINAL BLK MARKING

NOTE: A1, A2, B1, B2, C1, C2, TERMINAL BLOCK FOR REFERENCE ONLY.



CUSTOMER IS RESPONSIBLE FOR INSTALLATION TO MEET ALL LOCAL AND NATIONAL CODES

CATALOG NO	VOLTS(V)	PH±10%	AMPS(A)	APPROX WT-LBS
KLRUL2ATBE01	14.40	11.03	2	14.50
KLRUL2BTBE01	7.20	5.51	2	14.50
KLRUL2CTBE01	24.00	18.38	2	14.50
KLRUL2DTBE01	17.25	13.21	2	14.50
KLRUL2ETBE01	28.75	22.02	2	14.50
KLRUL2FTBE01	8.62	6.60	2	14.50
KLRUL3ATBE01	14.40	7.35	3	14.50
KLRUL3BTBE01	7.20	3.68	3	14.50
KLRUL3CTBE01	24.00	12.25	3	15.50
KLRUL3DTBE01	17.25	8.81	3	14.50
KLRUL3ETBE01	28.75	14.70	3	15.50
KLRUL3FTBE01	8.62	4.40	3	14.50
KLRUL4ATBE01	14.40	5.51	4	14.50
KLRUL4BTBE01	7.20	2.76	4	14.50
KLRUL4CTBE01	24.00	9.19	4	15.50
KLRUL4DTBE01	17.25	6.61	4	15.50
KLRUL4ETBE01	28.75	11.00	4	15.50
KLRUL4FTBE01	8.62	3.30	4	14.50
KLRUL6ATBE01	14.40	3.68	6	15.50
KLRUL6BTBE01	7.20	1.84	6	14.50
KLRUL6DTBE01	17.25	4.40	6	14.50
KLRUL6FTBE01	8.62	2.20	6	14.50
KLRUL8ATBE01	14.40	2.76	8	15.50
KLRUL8BTBE01	7.20	1.38	8	14.50
KLRUL8FTBE01	8.62	1.65	8	14.50
KLRUL12BTBE01	7.20	.919	12	14.50
KLRUL12FTBE01	8.62	1.10	12	14.50

VENDOR LILLY POWDER COATINGS, INC.  
 PRODUCT CODE 312E  
 COLOR PEBBLE GRAY  
 POWDER TYPE POLYESTER POLYURETHANE

PAINT SUITABLE FOR OUTDOOR APPLICATION PER UL TYPE 3R AND APPLIED PER A UL ACCEPTED DTW2 COATING PROGRAM.

**TCI** 7878 N. 86th STREET  
 MILWAUKEE, WI 53224

KLR FRAME A (TERM BLOCK)  
 TYPE 1 ENCLOSURE.

DRN BY **DSW** DATE **12/5/03** DWG NO. **B** KLRULENCL-1DG  
 SCALE **1/4"=1'** APPROV. **B** SHT. 1 of 1

TOLERANCES EXCEPT AS NOTED			
DECIMAL			
.XX ± .03			
.XXX ± .01			
FRACTIONAL			
± 1/32			
ANGULAR			
± 1/2°			
NO	REVISION	DATE	BY