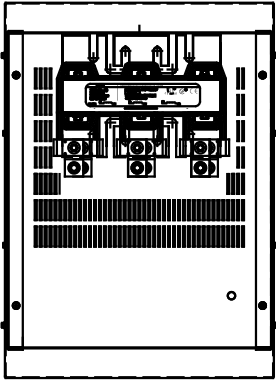
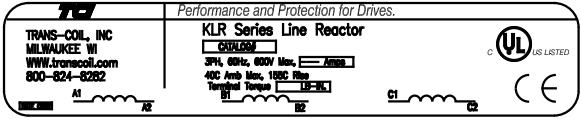


CATALOG NO	VOLTS(V.)	__mH±10%	__AMPS(A)	APPROX WT-LBS
KLRUL250CPT3R	24.0	.147	250	195
KLRUL250EPT3R	28.75	.176	250	195

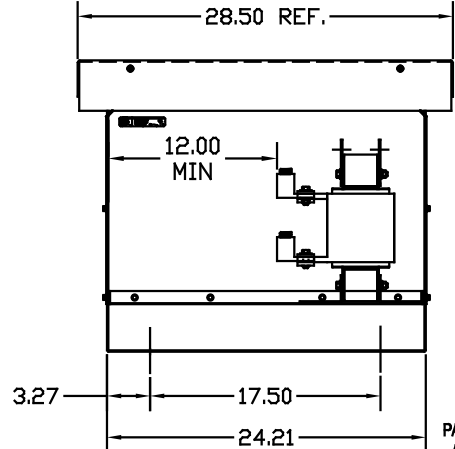
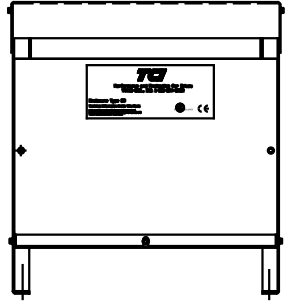
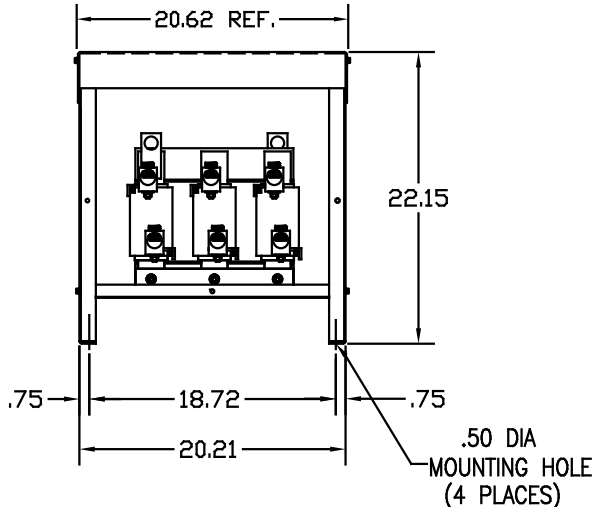
LUG WIRE RANGE            ONE 600MCM-4  
FOR REACTOR.                TWO 250MCM-1/0, AL. OR CU.  
TIGHTENING TORQUE.        500 LB-IN



LABEL PLACED ON FRONT OF CABINET.



LABEL PLACED ON INSIDE WALL OF CABINET.



VENDOR LILLY POWDER COATINGS, INC.  
PRODUCT CODE 312E  
COLOR PEBBLE GRAY  
POWDER TYPE POLYESTER POLYURETHANE  
PAINT SUITABLE FOR OUTDOOR APPLICATION PER UL TYPE 3R  
AND APPLIED PER A UL ACCEPTED DTW2 COATING PROGRAM.

CUSTOMER IS RESPONSIBLE FOR INSTALLATION  
TO MEET ALL LOCAL AND NATIONAL CODES

NO	REVISION	DATE	BY	TOLERANCES EXCEPT AS NOTED	7878 N. 86th STREET MILWAUKEE, WI 53224 <b>KLR FRAME L (ILSCO LUGS)  TYPE 3R ENCLOSURE</b>
				DECIMAL	
				.XX ± .03 .XXX ± .01	
				FRACTIONAL ± 1/32	
				ANGULAR ± 1/2°	DRN BY <b>DSW</b> DATE <b>10/04/04</b> DWG. NO. <b>B</b> SCALE <b>TO FIT</b> APPROV. <b>KLRLE3R-9DG</b> SHT. 1 of 1