

LABEL PLACED ON INSIDE WALL OF CABINET.

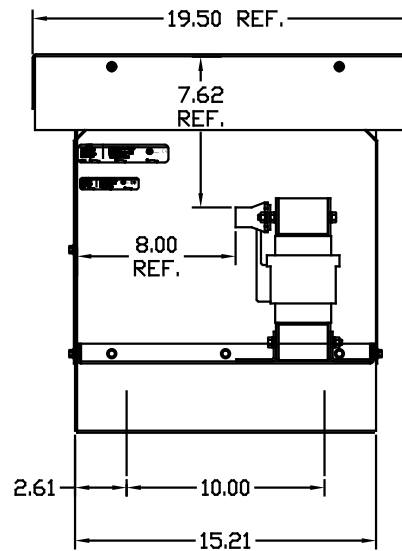
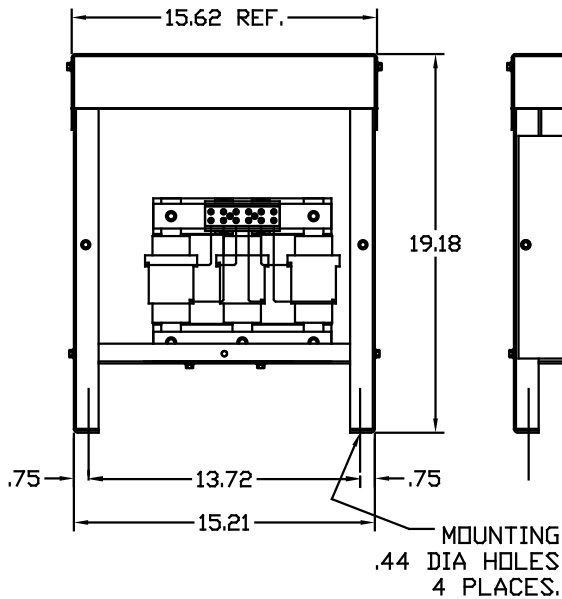


LABEL PLACED ON FRONT OF CABINET.

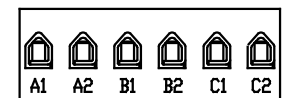
CATALOG NO	VOLTS(V.)	__mH±10%	__AMPS(A)	APPROX WT-LBS
KLRUL55ETBE3R	28.75	.801	55	87
KLRUL80CTBE3R	24.00	.459	80	87
KLRUL80DTBE3R	17.25	.330	80	87
KLRUL80ETBE3R	28.75	.550	80	87

TORQUE(LB-IN)=CUSTOMER WIRE

35=1 AWG THRU 4 AWG
30=6 AWG THRU 14 AWG
25=16 AWG THRU 22 AWG



NOTE: A1, A2, B1, B2, C1, C2,
MARKINGS ON TERMINAL BLOCK
FOR REFERENCE ONLY.




TERMINAL BLK MARKING

CUSTOMER IS RESPONSIBLE FOR INSTALLATION
TO MEET ALL NATIONAL AND LOCAL ELECTRICAL CODES.

FINISH:
VENDOR - LILLY POWDER COATINGS, INC.
PRODUCT CODE - 312E
COLOR - PEBBLE GRAY
POWDER TYPE - POLYESTER-POLYURETHANE

PAINT SUITABLE FOR OUTDOOR APPLICATION PER UL TYPE 3R
AND APPLIED PER A UL ACCEPTED DTVV2 COATING PROGRAM.

NO	REVISION	DATE	BY	TOLERANCES EXCEPT AS NOTED	 7878 N. 86th STREET MILWAUKEE, WI 53224 KLRUL, TYPE 3R, FRAME G	DRN BY	DATE	DWG NO.	
				DECIMAL			DSW	10/05/04	B
				.XX ± .03					
				.XXX ± .01					
				FRACTIONAL		SCALE	APPRVD.		
				± 1/32		TO FIT			
				ANGULAR					
				± 1/2°					