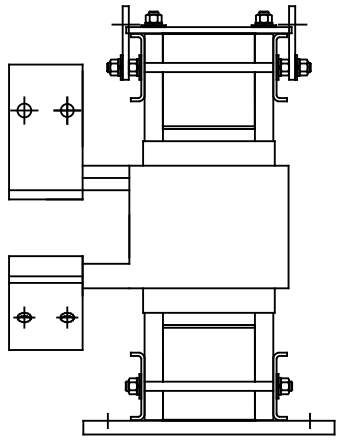
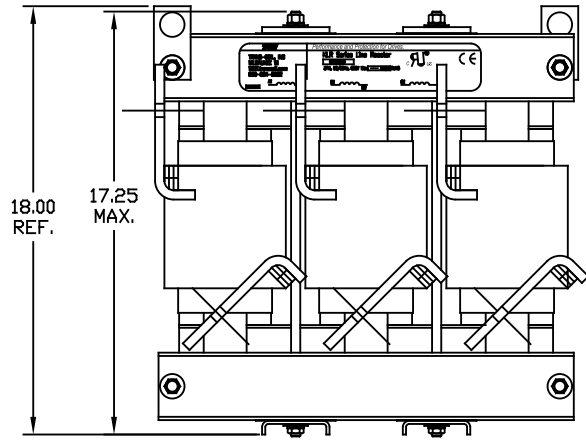
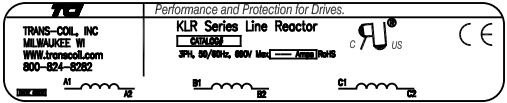
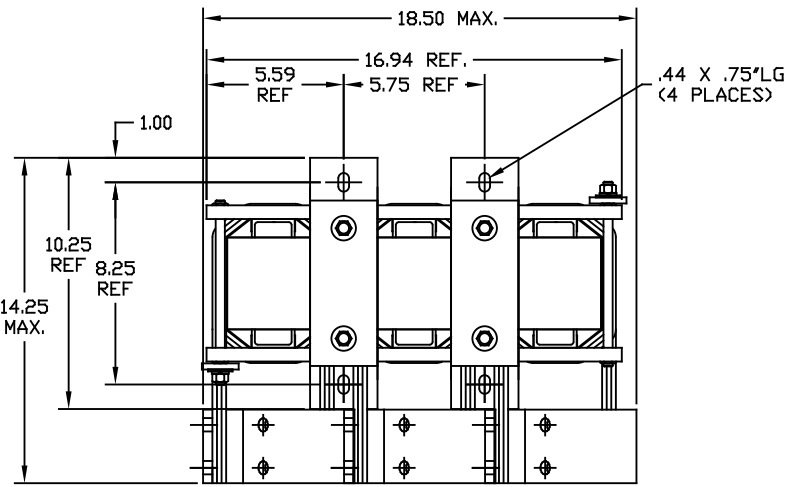


690V	NEC MOTOR HP	CATALOG NO	__AMPS(A)	APPROX WT-LBS	WATTS LOSS	TERMINAL HOLE SIZE
5% Z	900	KLR950ECBV	950	290	1100	.53 DIA HOLE



				TOLERANCES (EXCEPT AS NOTED)		7878 N. 86th STREET MILWAUKEE, WI 53224	
				DECIMAL		KLR SERIES 3 PH REACTORS 690V (FRAME X)	
				.XX ± .03			
				.XXX ± .01			
				FRACTIONAL		<small>DRN. BY</small> DSW <small>DATE</small> 02/28/07 <small>DWG. NO.</small> B KLR950ECBV/DG	
				± 1/32		<small>SCALE</small> TO FIT <small>APPROV.</small>	
				ANGULAR		<small>REV. 1</small> of 1	
				± 1/2°			
<small>NO.</small>	<small>REVISION</small>	<small>DATE</small>	<small>BY</small>				