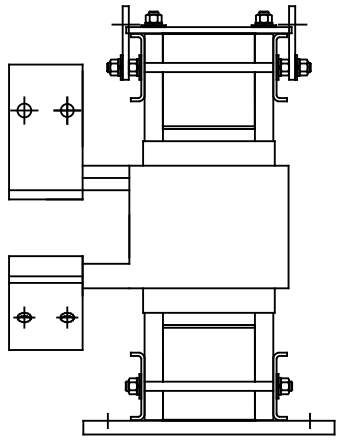
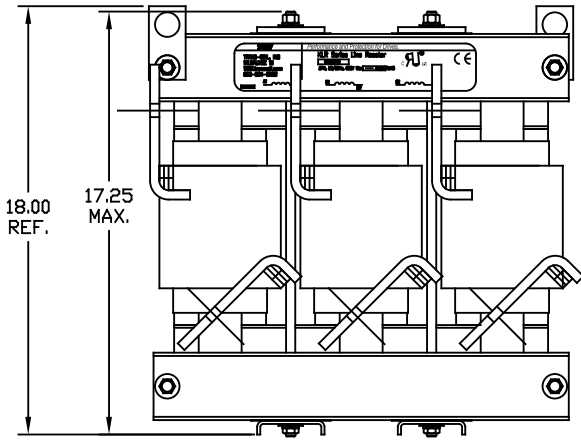
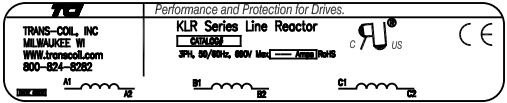
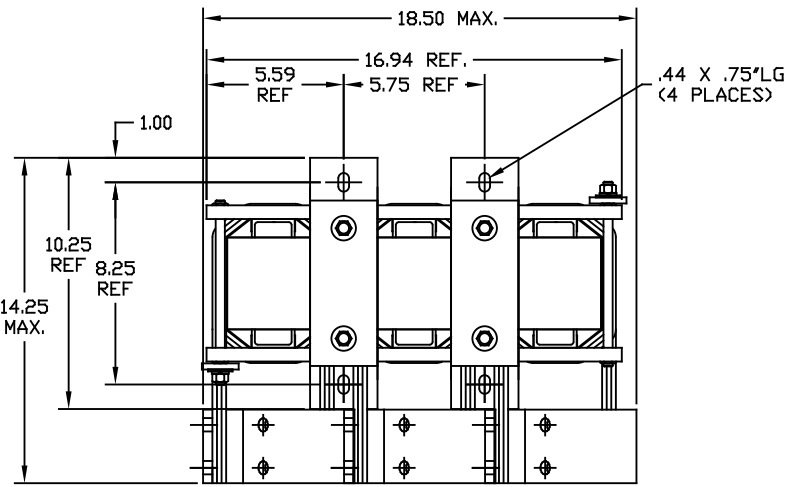


690V	NEC MOTOR HP	CATALOG NO	__AMPS(A)	APPROX WT-LBS	WATTS LOSS	TERMINAL HOLE SIZE
3% Z	800	KLR850DCBV	850	275	703	.53 DIA HOLE



				TOLERANCES (EXCEPT AS NOTED)		7878 N. 86th STREET MILWAUKEE, WI 53224	
				DECIMAL			
				.XX ± .03		KLR SERIES 3 PH REACTORS 690V (FRAME X)	
				.XXX ± .01			
				FRACTIONAL ± 1/32			
				ANGULAR ± 1/2°		DRN BY DSW DATE 02/28/07 DWG. NO. B KLR850DCBVDG SCALE TO FIT APPR'D [Signature]	
NO	REVISION	DATE	BY			SH. 1 of 1	