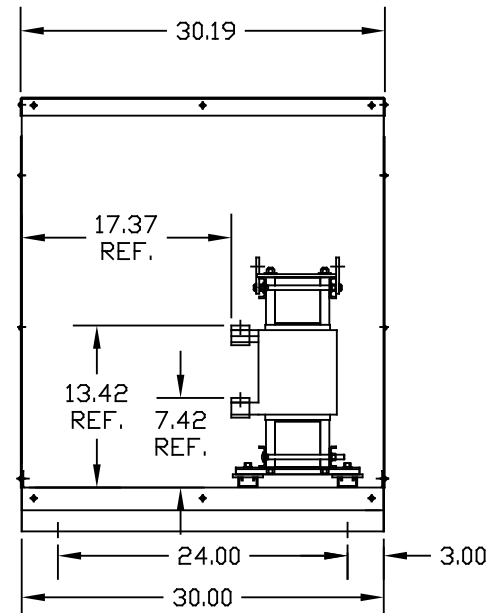


.50 DIA MOUNTING HOLES 4 PLACES.



CUSTOMER IS RESPONSIBLE FOR INSTALLATION TO MEET ALL NATIONAL AND LOCAL ELECTRICAL CODES.

690V	NEC MOTOR HP	CATALOG NO	__AMPS(A)	APPROX WT-LBS	WATTS LOSS	TERMINAL HOLE SIZE
3% Z	700	KLR750DCB7V	750	430	604	.53 DIA HOLE

TOLERANCES (EXCEPT AS NOTED)			
DECIMAL	.XX ±.03	.XXX ±.010	
FRACTIONAL	± 1/16		
ANGULAR	± 1/2°		

TCI 7878 N. 86th STREET MILWAUKEE, WI 53224

KLR SERIES 3 PH REACTOR 690V (FRAME X) ENCLOSED

DRN. BY DSW DATE 03/30/07 DWG. NO. KLR750DCB7VDG
 SCALE TO FIT APRVD. SHT. 1 OF 1

NO	REVISION	DATE	BY