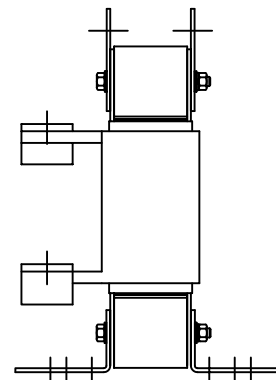
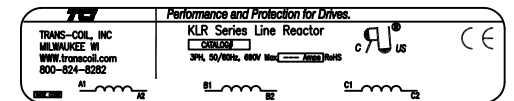


690V	NEC MOTOR HP	CATALOG NO	VOLTS(V.)	APPROX WT-LBS	WATTS LOSS	TERMINAL HOLE SIZE
3% Z	400	KLR420DCBV	17.25	100	435	.56 DIA HOLE



NO	REVISION	DATE	BY	TOLERANCES (EXCEPT AS NOTED)	7878 N. 86th STREET MILWAUKEE, WI 53224 KLR SERIES 3 PH REACTORS 690V (FRAME L)	DRN. BY	DATE	DWG. NO.	
				DECIMAL			DSW	02/21/07	B
				.XX ± .03					
				.XXX ± .01					
				FRACTIONAL		SCALE	APPRVD.		
				± 1/32		TO FIT			
				ANGULAR					
				± 1/2°					

KLR420DCBVDG
SHT.1 OF1