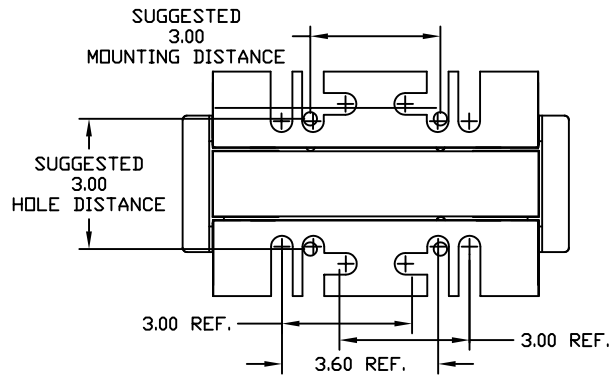
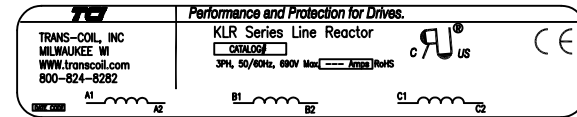
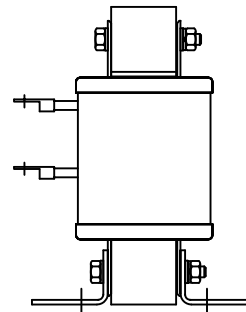
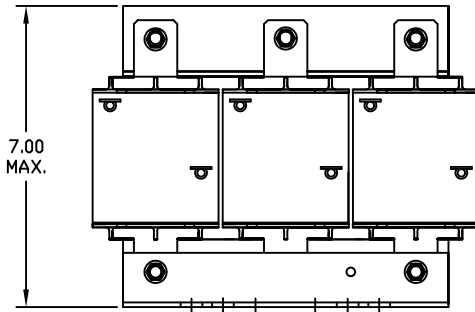


690V	NEC MOTOR HP	CATALOG NO	__AMPS(A)	APPROX WT-LBS	WATTS LOSS	TERMINAL RING HOLE SIZE
5% Z	30	KLR35ERLV	35	23	125	.25 DIA HOLE



				TOLERANCES (EXCEPT AS NOTED)	7878 N. 86th STREET MILWAUKEE, WI 53224	
				DECIMAL	KLR SERIES 3 PH REACTORS 690V (F FRAME)	
				.XX ± .03		
				.XXX ± .01		
				FRACTIONAL ± 1/32		
				ANGULAR ± 1/2°	DRN. BY DSW DATE 02/07/07 SCALE TO FIT APPR'D.	DWG. NO. B KLR35ERLV DG SHT.1 OF 1
NO	REVISION	DATE	BY			