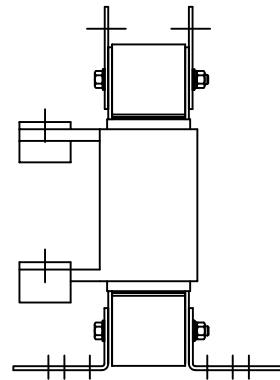



690V	NEC MOTOR HP	CATALOG NO	VOLTS(V.)	APPROX WT-LBS	WATTS LOSS	TERMINAL HOLE SIZE
3% Z	300	KLR300DCBV	17.25	101	335	.44 DIA HOLE



				TOLERANCES (EXCEPT AS NOTED)	 7878 N. 86th STREET MILWAUKEE, WI 53224 KLR SERIES 3 PH REACTORS 690V (FRAME L)				
				DECIMAL			DRN. BY DSW	DATE 02/21/07	DWG. NO. B KLR300DCBVDG
				.XX ± .03			SCALE TO FIT	APPRD.	SHT. 1 OF 1
				.XXX ± .01					
				FRACTIONAL					
				± 1/32					
				ANGULAR					
				± 1/2°					
NO	REVISION	DATE	BY						