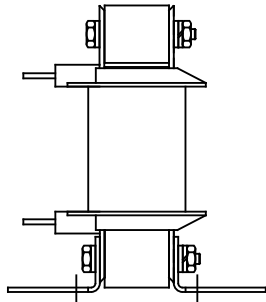
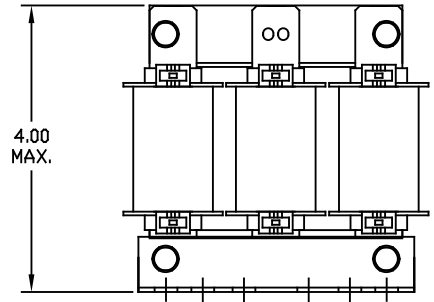
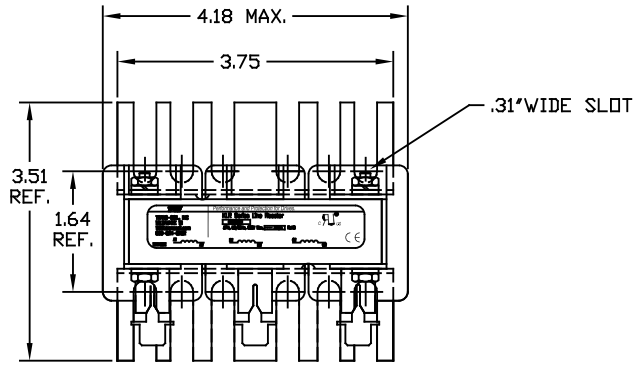


690V	NEC MOTOR HP	CATALOG NO	__AMPS(A)	APPROX WT-LBS	WATTS LOSS
5% Z	1	KLR2EQDV	2	4	13

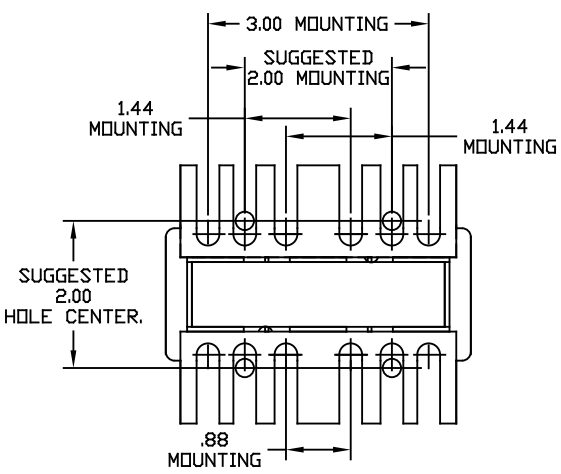


TCI Performance and Protection for Drives.

TRANS-COIL, INC
MILWAUKEE WI
WWW.transcoil.com
800-824-8282

KLR Series Line Reactor
CATALOG#
3PH, 50/60Hz, 690V Max, Amors RotS

TCI[®] US
CE



				TOLERANCES EXCEPT AS NOTED:		7878 N. 86th STREET MILWAUKEE, WI 53224 KLR SERIES 3 PH REACTOR 690V (FRAME A)
				DECIMAL		
				.XX ± .03 .XXX ± .010		
				FRACTIONAL ± 1/16		
				ANGULAR ± 1/2°		DRW BY: DSW DATE: 02/07/07 SCALE: TO FIT ING. NO.: KLR2EQDVG SHT. 1 OF 1
NO	REVISION	DATE	BY			