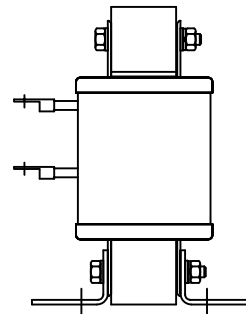
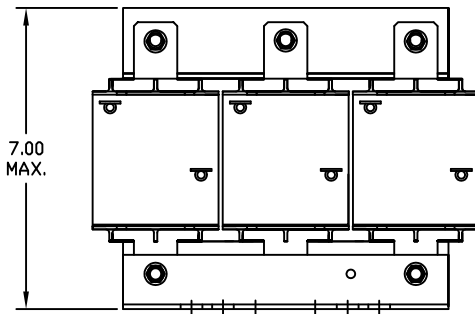


690V	NEC MOTOR HP	CATALOG NO	__AMPS(A)	APPROX WT-LBS	WATTS LOSS	TERMINAL RING HOLE SIZE
5% Z	25	KLR27ERLV	27	17	94	.25 DIA HOLE



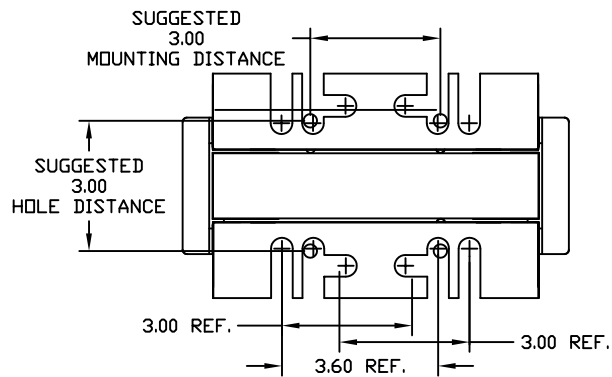
TCI Performance and Protection for Drives.


TRANS-COIL, INC
MILWAUKEE WI
WWW.transcoil.com
800-824-8282

KLR Series Line Reactor
CATALOG #
3PH, 50/60Hz, 690V Max **Amperes** (A) (A) (A)

UL US CE

A1 A2 B1 B2 C1 C2



NO	REVISION	DATE	BY	TOLERANCES (EXCEPT AS NOTED)	 7878 N. 86th STREET MILWAUKEE, WI 53224 KLR SERIES 3 PH REACTORS 690V (F FRAME)	DRN. BY	DATE	DWG. NO.
				DECIMAL		DSW	02/07/07	B
				.XX ± .03		SCALE	TO FIT	APPRVD.
				.XXX ± .01				
				FRACTIONAL				
				± 1/32				
				ANGULAR				
				± 1/2°				

B KLR27ERLV DG
SHT.1 OF 1