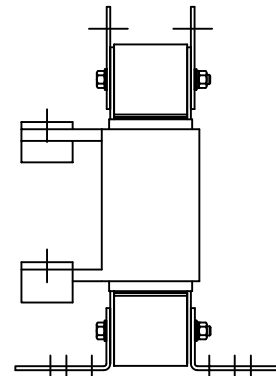
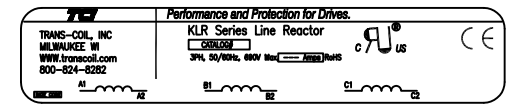


690V	NEC MOTOR HP	CATALOG NO	VOLTS(V.)	APPROX WT-LBS	WATTS LOSS	TERMINAL HOLE SIZE
3% Z	250	KLR250DCBV	17.25	91	316	.44 DIA HOLE



				TOLERANCES (EXCEPT AS NOTED)	7878 N. 86th STREET MILWAUKEE, WI 53224	
				DECIMAL	KLR SERIES 3 PH REACTORS 690V (FRAME L)	
				.XX ± .03		
				.XXX ± .01		
				FRACTIONAL ± 1/32		
				ANGULAR ± 1/2°	DRN BY DSW DATE 02/21/07 SCALE TO FIT APPR'D	DVG. NO. B KLR250DCBVDG SHT.1 OF1
NO	REVISION	DATE	BY			