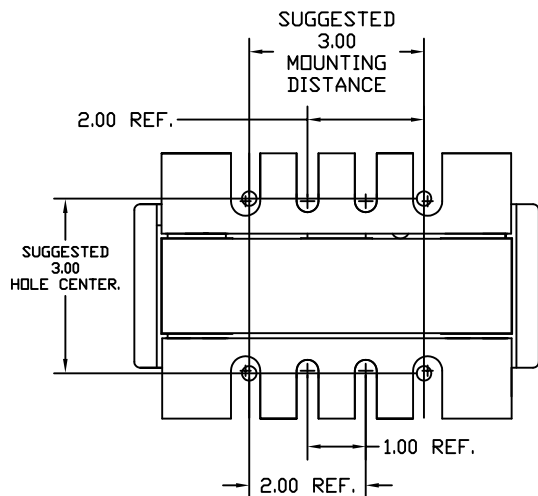
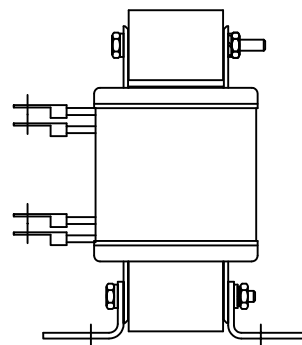
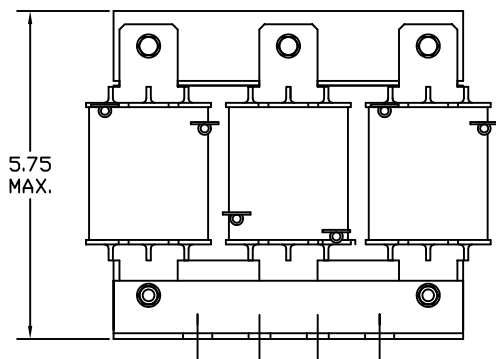
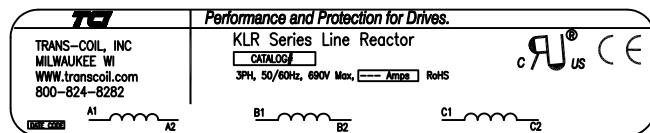


690V	NEC MOTOR HP	CATALOG NO	__AMPS(A)	APPROX WT-LBS	WATTS LOSS	RING TERMINAL HOLE SIZE.
5% Z	15	KLR21ERLV	21	17	69	.25



		TOLERANCES (EXCEPT AS NOTED)		7878 N. 86th STREET MILWAUKEE, WI 53224	
		DECIMAL			
		.XX ± .03		KLR SERIES 3 PH REACTOR 690V (FRAME E) W/RL'S	
		.XXX ± .01			
		FRACTIONAL		DRN BY DSW DATE 02/08/07 DWG NO. C KLR21ERLV DG	
		± 1/32		SCALE TO FIT	
		ANGULAR		SHT. 1 OF 1	
		± 1/2°			
NO	REVISION	DATE	BY		