

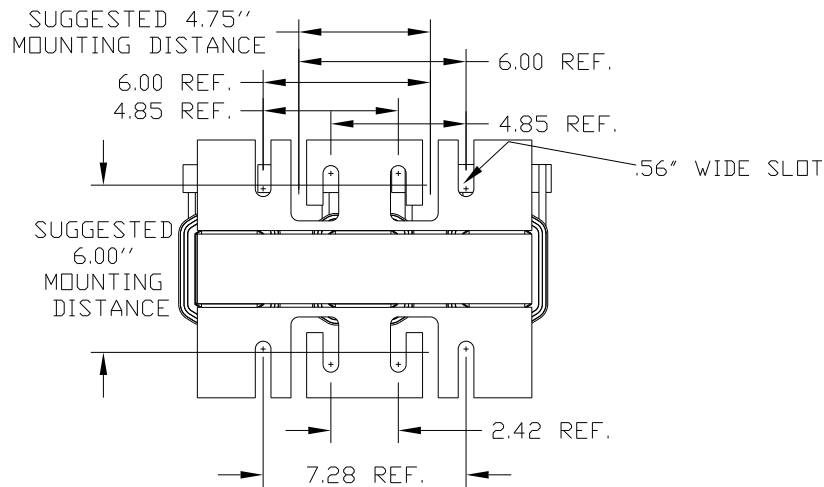
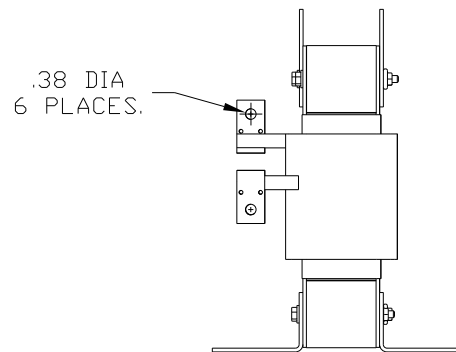
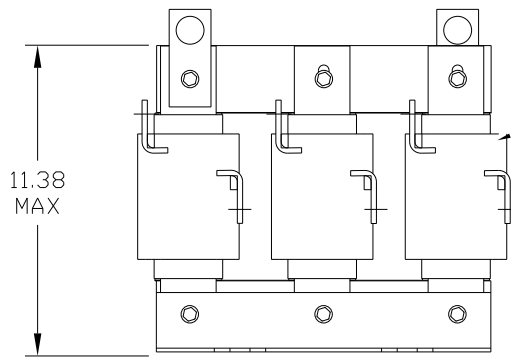
690V	NEC MOTOR HP	CATALOG NO	__mH-±10%	__AMPS(A)	APPROX WT-LBS	WATTS LOSS	TERMINAL HOLE SIZE
5% Z	200	KLR200ECBV	.220	200	110	299	.38

**TCI** Performance and Protection for Drives.

TRANS-COIL, INC  
MILWAUKEE, WI  
WWW.TRANS-COIL.COM  
800-824-8282

KLR Series Line Reactor  
CATALOG #  
3% 50/60Hz, 690V Max [--- Amps]ReHS

RU<sup>®</sup> CE



				TOLERANCES (EXCEPT AS NOTED):		TCI 7878 N. 86th STREET MILWAUKEE, WI 53224	
				DECIMAL		KLR200ECBV, LINE REACTOR 200 AMPS 690V MAX.	
				.XX ± .03			
				.XXX ± .01			
				FRACTIONAL		NO 2908 CHG TERMINAL ORIENTATION 3/19/13 DSW DATE 02/21/07 DWG NO. KLR200ECBV/DG	
				± 1/32			
				ANGULAR		SCALE TO FIT	
				± 1/2°		APPROV. SHT. 1 OF 1	