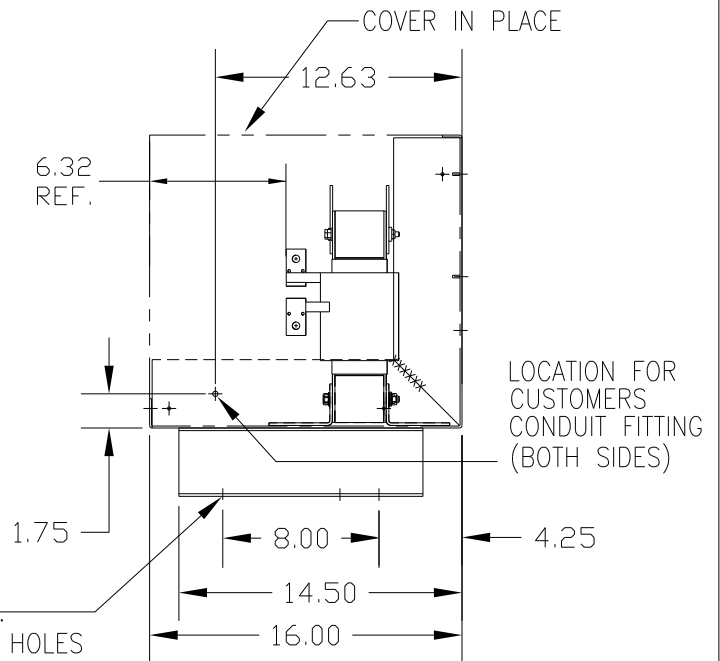
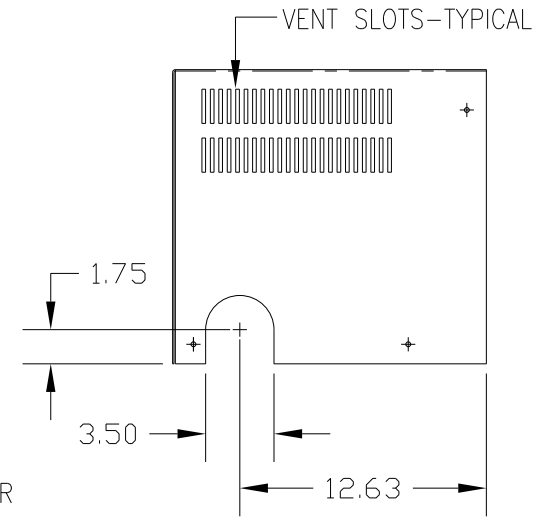
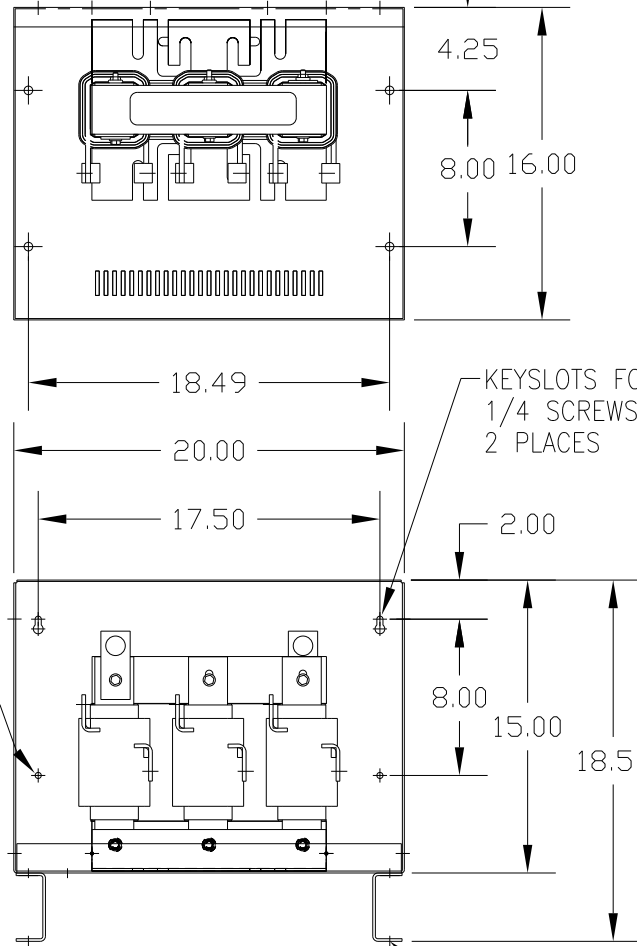
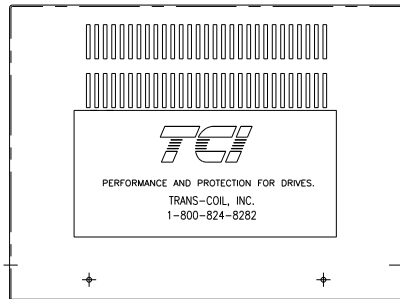


Performance and Protection for Drives.
 TRANS-COL, INC.
 MILWAUKEE, WI
 WWW.TRANS-COL.COM
 800-824-8282



CUSTOMER IS RESPONSIBLE FOR INSTALLATION TO MEET ALL NATIONAL AND LOCAL ELECTRICAL CODES.

690V	NEC MOTOR HP	CATALOG NO	__AMPS(A)	APPROX WT-LBS	WATTS LOSS	TERMINAL HOLE SIZE
5% Z	200	KLR200ECB5V	200	160	299	.38 DIA HOLE

TOLERANCES (EXCEPT AS NOTED):				TCI 7878 N. 86th STREET MILWAUKEE, WI 53224	
			DECIMAL	KLR SERIES 3 PH REACTOR 200 AMPS 690V MAX.	
			.XX ± .03		
			.XXX ± .01		
			FRACTIONAL ± 1/32	DRN BY DSW	DATE 03/30/07
Δ	2908 CHG. TERMINAL ORIENTATION	3/19/13	DSW	SCALE TO FIT	APPRVD
NO	REVISION	DATE	BY	ANGULAR ± 1/2°	DWG NO. C KLR200ECB5VDG
					SHT. 1 OF 1