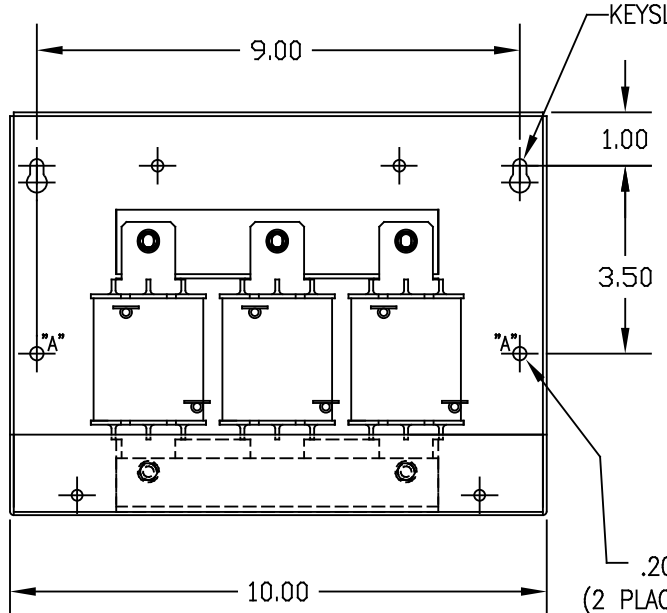
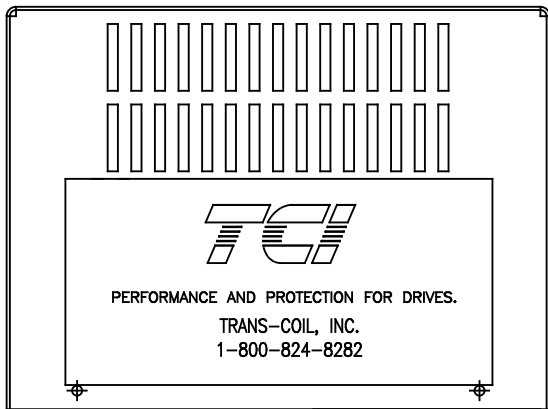
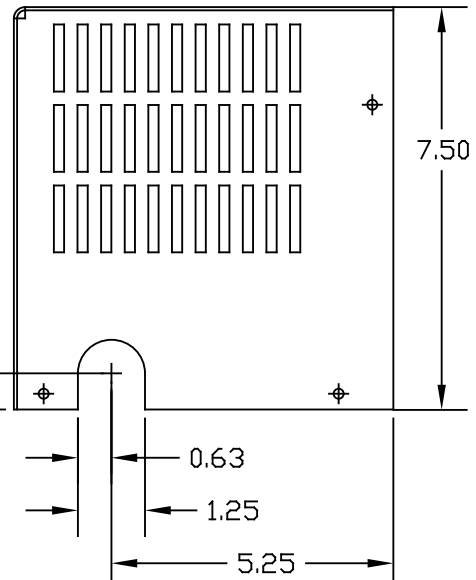


.187 DIA HOLE
(4 PLACES)

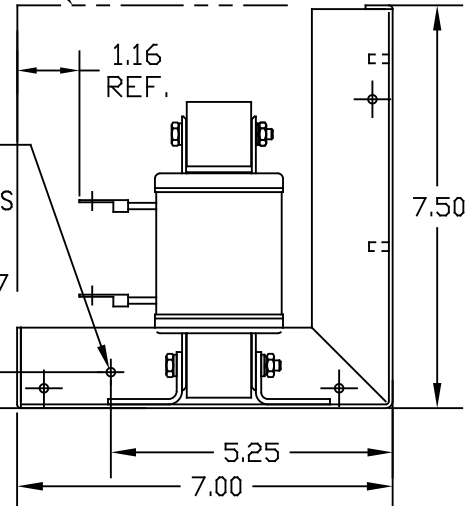


KEYSLOT FOR #10 SCREW
(2 PLACES)

COVER IN

LOCATION FOR CUSTOMERS
CONDUIT FITTINGS
(BOTH SIDES)

.203 DIA HOLE
(2 PLACES) MARKED "A"



CUSTOMER IS RESPONSIBLE FOR INSTALLATION TO MEET ALL NATIONAL AND LOCAL ELECTRICAL CODES.

VOLTS	NEC MOTOR HP	CATALOG NO	AMPS(A)	APPROX WT-LBS	WATTS LOSS	RING TERMINAL HOLE SIZE.
690V	15	KLR18DRL2V	18	18	44	.190

NO	REVISION	DATE	BY	TOLERANCES EXCEPT AS NOTED	REGIONAL
				.XX ±.03	TCI 7878 N. 86th STREET MILWAUKEE, WI 53224 KLR SERIES 3 PH REACTOR 690V (FRAME C) ENCLOSED
				.XXX ±.010	
				FRACTIONAL ± 1/16	
				ANGULAR ± 1/2°	DRAWN BY DSW DATE 03/13/07 DWG NO. KLR18DRL2V/DG SCALE TO FIT APPROVED SHT.1 OF 1