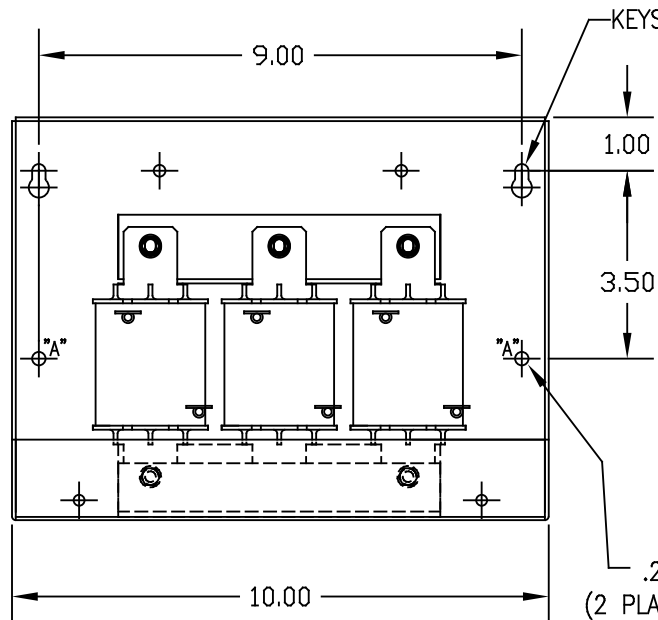
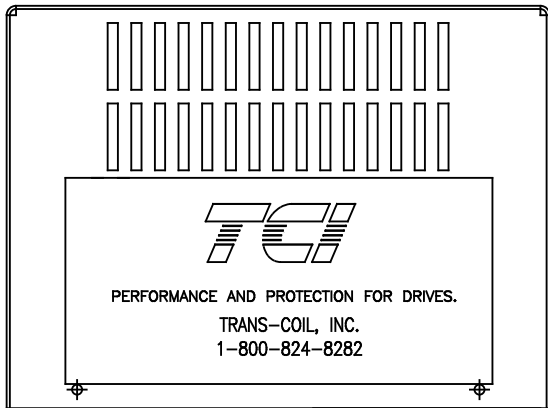
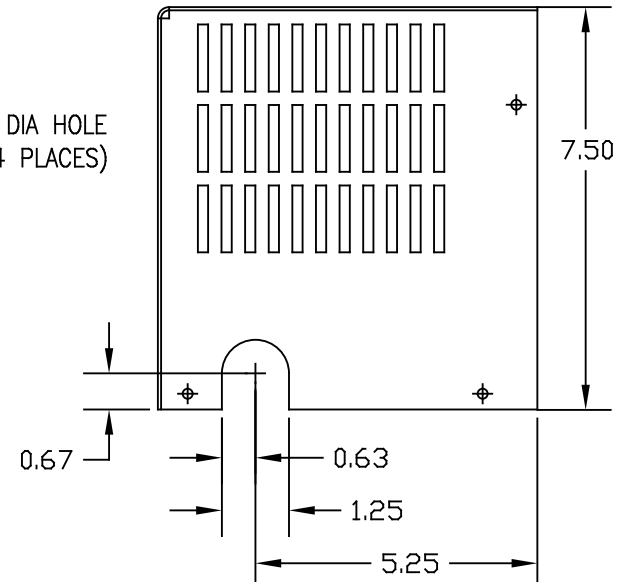


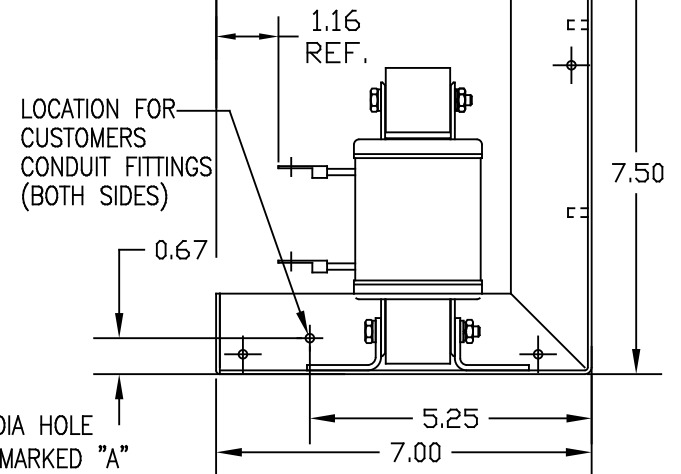
.187 DIA HOLE  
 (4 PLACES)



KEYSLOT FOR #10 SCREW  
 (2 PLACES)

COVER IN

LOCATION FOR CUSTOMERS  
 CONDUIT FITTINGS  
 (BOTH SIDES)



CUSTOMER IS RESPONSIBLE FOR INSTALLATION  
 TO MEET ALL NATIONAL AND LOCAL ELECTRICAL CODES.

690V	NEC MOTOR HP	CATALOG NO	__AMPS(A)	APPROX WT-LBS	WATTS LOSS	RING TERMINAL HOLE SIZE.
5% Z	10	KLR16ERL2V	16	19	67	.25

TOLERANCES EXCEPT AS NOTED				7878 N. 86th STREET MILWAUKEE, WI 53224	
DECIMAL	.XX ±.03				
FRACTIONAL	.XXX ±.010				
ANGULAR	± 1/16				
NO	REVISION	DATE	BY	SCALE TO FIT	DRG. NO. KLR16ERL2VDG SHT.1 OF1 DATE 03/30/07 APPR'D DRAWN BY DSW