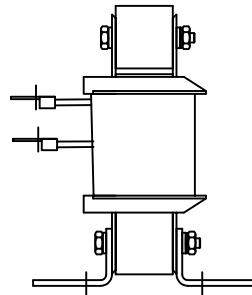


690V	NEC MOTOR HP	CATALOG NO	__AMPS(A)	APPROX WT-LBS	WATTS LOSS	RING TERMINAL HOLE SIZE.
3% Z	10	KLR16DRLV	16	8	52	#10

TCI TRANS-COIL, INC MILWAUKEE WI WWW.transcoil.com 800-824-8282	Performance and Protection for Drives. KLR Series Line Reactor CATALOG # [] 3PH, 50/60Hz, 690V Max, [] Amps, RoHS		



				TOLERANCES (EXCEPT AS NOTED)		7878 N. 86th STREET MILWAUKEE, WI 53224	
				DECIMAL .XX ± .03 .XXX ± .01		KLR SERIES 3 PH REACTOR (FRAME B) WITH RING TERMS	
				FRACTIONAL ± 1/32			
				ANGULAR ± 1/2°			
NO	REVISION	DATE	BY	DRN BY DSW	DATE 02/07/07	APPRV. []	DVG. NO. B KLR16DRLVDG SHT.1 OF1