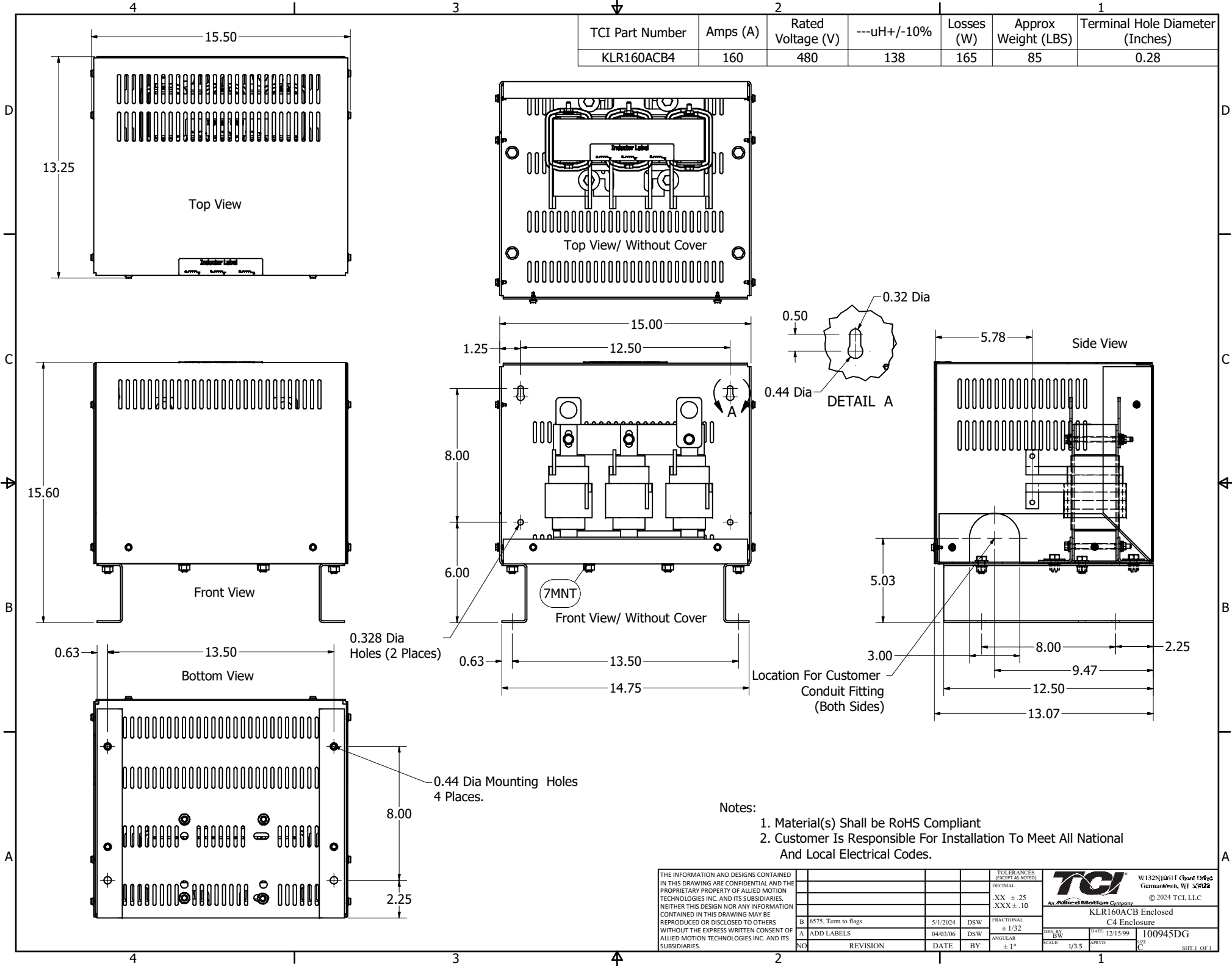



TCI Part Number	Amps (A)	Rated Voltage (V)	---uH+/-10%	Losses (W)	Approx Weight (LBS)	Terminal Hole Diameter (Inches)
KLR160ACB4	160	480	138	165	85	0.28



THE INFORMATION AND DESIGNS CONTAINED IN THIS DRAWING ARE CONFIDENTIAL AND THE PROPRIETARY PROPERTY OF ALLIED MOTION TECHNOLOGIES INC. AND ITS SUBSIDIARIES. NEITHER THIS DESIGN NOR ANY INFORMATION CONTAINED IN THIS DRAWING MAY BE REPRODUCED OR DISCLOSED TO OTHERS WITHOUT THE EXPRESS WRITTEN CONSENT OF ALLIED MOTION TECHNOLOGIES INC. AND ITS SUBSIDIARIES.				TOLERANCES (EXCEPT AS NOTED)		 W132N10611 (Rev 1346) Germantown, WI 53022 © 2024 TCI, LLC	
				DECIMAL	.XX ± .25 .XXX ± .10		
B	6575, Term to flags	5/1/2024	DSW	FRACTIONAL	± 1/32	KLR160ACB Enclosed C4 Enclosure	
A	ADD LABELS	04/03/06	DSW	ANGULAR	± 1°		
NO	REVISION	DATE	BY	SCALE	1/3.5	DWN BY: BW DATE: 12/15/99 SCALE: 1/3.5	100945DG SHEET 1 OF 1