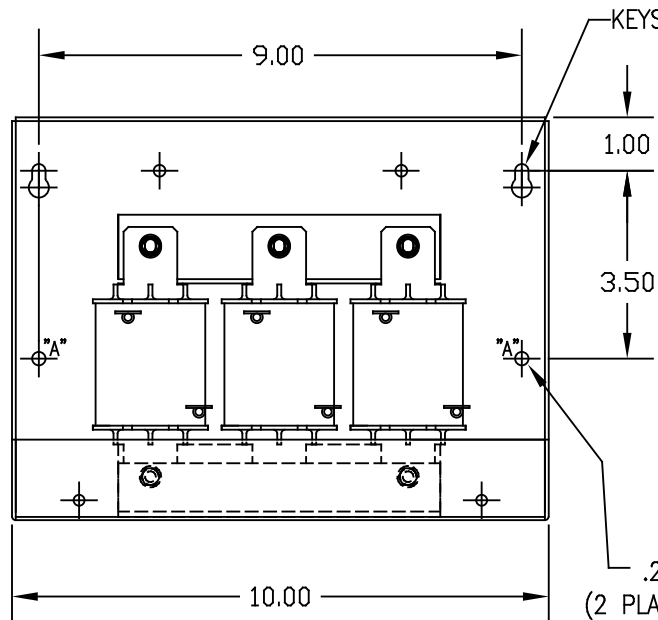
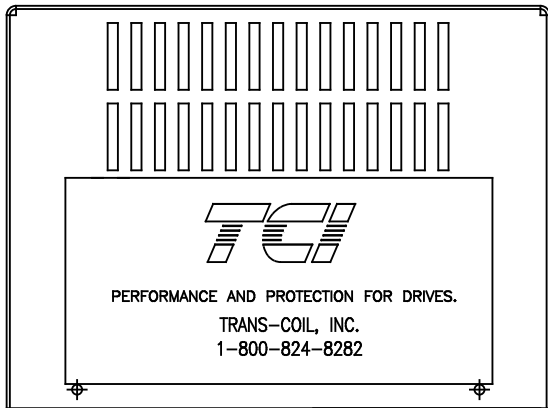
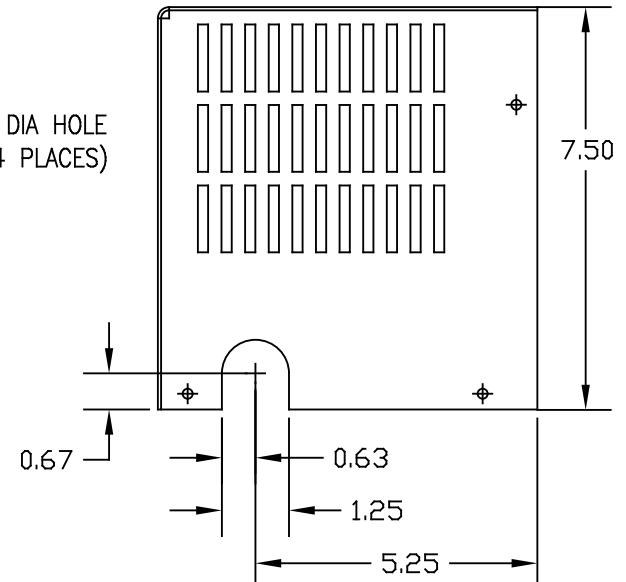


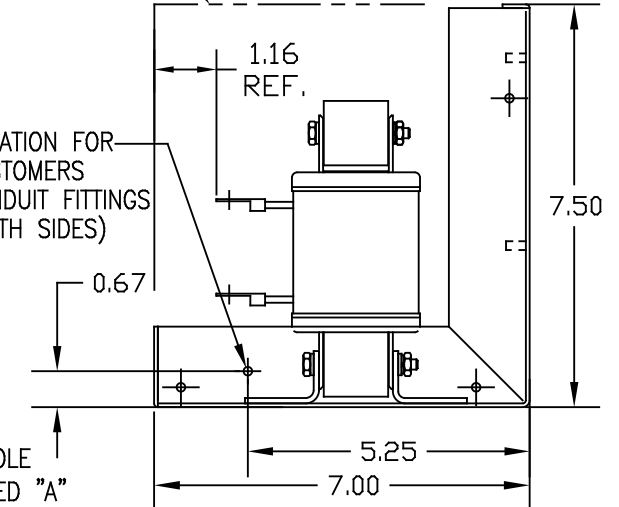
.187 DIA HOLE  
 (4 PLACES)



KEYSLOT FOR #10 SCREW  
 (2 PLACES)  
 COVER IN

LOCATION FOR CUSTOMERS  
 CONDUIT FITTINGS  
 (BOTH SIDES)

.203 DIA HOLE  
 (2 PLACES) MARKED "A"



CUSTOMER IS RESPONSIBLE FOR INSTALLATION  
 TO MEET ALL NATIONAL AND LOCAL ELECTRICAL CODES.

690V	NEC MOTOR HP	CATALOG NO	__AMPS(A)	APPROX WT-LBS	WATTS LOSS	RING TERMINAL HOLE SIZE.
5% Z	7.5	KLR12ERL2V	12	14	56	.190

TOLERANCES EXCEPT AS NOTED				7878 N. 86th STREET MILWAUKEE, WI 53224	
DECIMAL	.XX ±.03			<b>KLR SERIES 3 PH REACTOR</b> <b>690V (FRAME C) ENCLOSED</b>	
FRACTIONAL	.XXX ±.010				
ANGULAR	± 1/16				
NO	REVISION	DATE	BY	DRN BY DSW SCALE TO FIT	DATE 03/30/07 APPR'D DWG. NO. KLR12ERL2VDG SHT.1 OF1