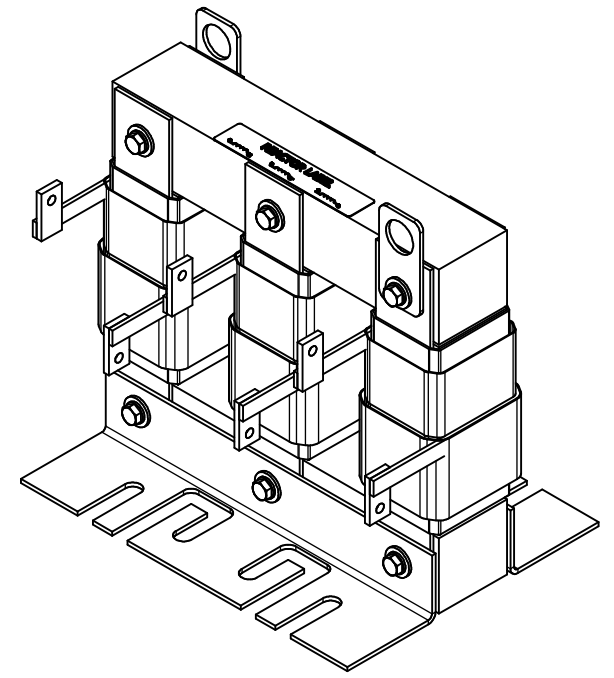
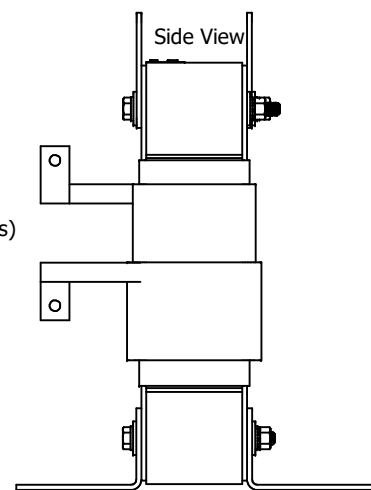
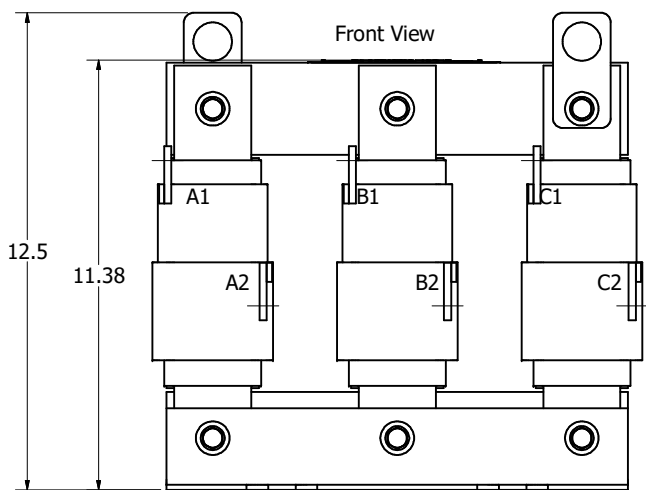
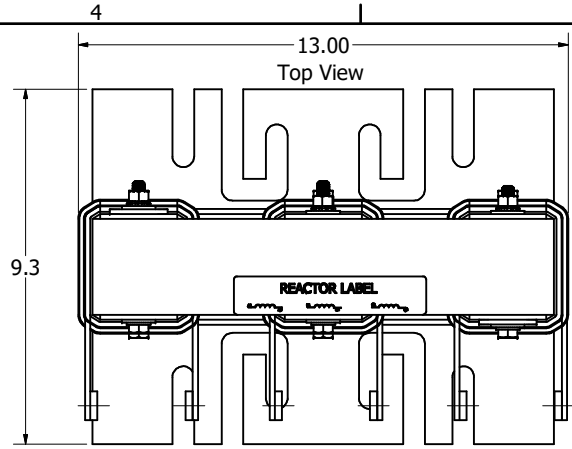
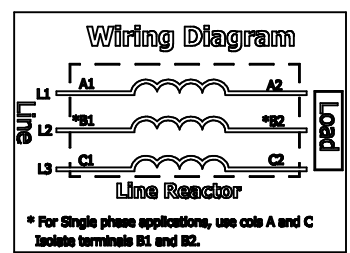
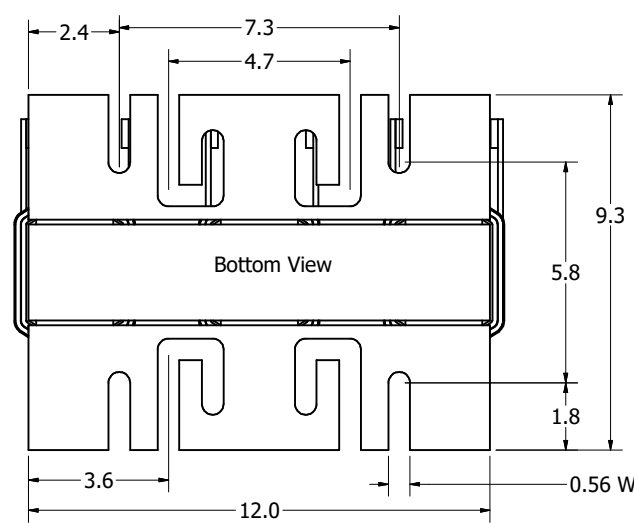


Part Number	Horsepower (HP)	Amps (A)	--uH +/-10%	Losses (W)	Weight (LBS)	Terminal Hole Size (Inches)
KLR130CCB	100	130	283	239	75	0.28
KLR130ECB	125	130	339	287	75	0.28




(Customer Connections)  
Markings On Coils  
For Reference Only.



Customer Is Responsible For Installation  
To Meet All National And Local Electrical Codes.

Material(s) Shall be RoHS Compliant

THE INFORMATION AND DESIGNS CONTAINED IN THIS DRAWING ARE CONFIDENTIAL AND THE PROPRIETARY PROPERTY OF ALLIED MOTION TECHNOLOGIES INC. AND ITS SUBSIDIARIES. NEITHER THIS DESIGN NOR ANY INFORMATION CONTAINED IN THIS DRAWING MAY BE REPRODUCED OR DISCLOSED TO OTHERS WITHOUT THE EXPRESS WRITTEN CONSENT OF ALLIED MOTION TECHNOLOGIES INC. AND ITS SUBSIDIARIES.				TOLERANCES (EXCEPT AS NOTED)		 W132N10611 (Rev 13 Feb 2024) Germantown, WI 53022 © 2024 TCI, LLC	
				DECIMAL			.XX ± .25 .XXX ± .10
A 6591, Bus Bar to Flag 32766 NO REVISION				FRACTIONAL		KLR (L Frame) Reactor Drawing KLR-91DG	
				ANGULAR			± 1° ± 1/32
DATE		BY		DATE		SCALE	
3/5/2024		DSW		03/16/98		1/2.5	