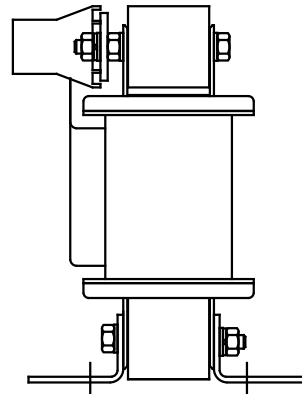
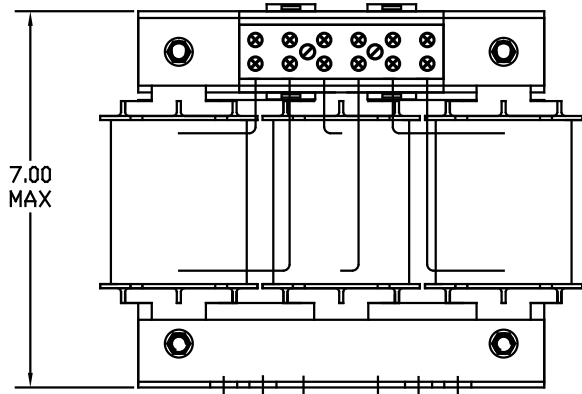


TORQUE(LB-IN)=CUSTOMER WIRE
 35=1 AWG THRU 4 AWG
 30=6 AWG THRU 14 AWG
 25=16 AWG THRU 22 AWG

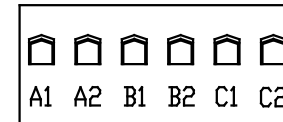
CATALOG NO	VOLTS(V.)	__mH ±10%	__AMPS(A)	APPROX WT-LBS
KLR25ETB	28.75	1.76	25	23
KLR27ETB	28.75	1.63	27	23
KLR35CTB	24.00	1.05	35	23
KLR35ETB	28.75	1.258	35	23
KLR45CTB	24.00	.817	45	26
KLR45DTB	17.25	.587	45	26
KLR55ATB	14.40	.401	55	24
KLR55DTB	17.25	.480	55	24
KLR80BTB	7.20	.138	80	23
KLR80FTB	8.62	.165	80	23



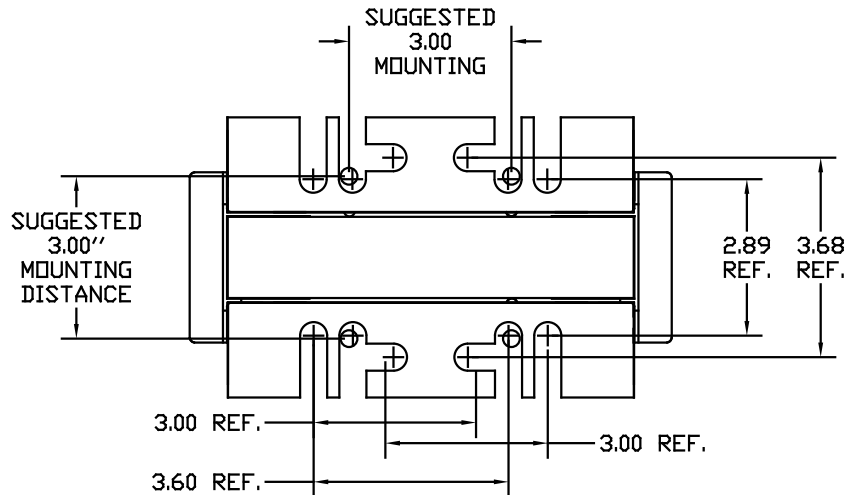
TRANS-COIL, INC
 MILWAUKEE WI
 WWW.transcoil.com
 800-824-8282

Performance and Protection for Lives.
KLR Series Line Reactor
 3PH, 60Hz, 600V Max, 118C Frame
 400 Amp Max, 118C Frame

US SP CE



NOTE: A1, A2, B1, B2, C1, C2,
 MARKINGS ON TERMINAL BLOCK.
 FOR REFERENCE ONLY.



HI-POT VOLT	VAC
2650	468-2

			TOLERANCES EXCEPT AS NOTED:	7878 N. 86th STREET MILWAUKEE, WI 53224
			DECIMAL	
			.XX ± .03 .XXX ± .01	
			FRACTIONAL ± 1/32	
M 2235, MOUNTING CHG	06/06/03	DSW	ANGULAR ± 1/2°	SINE-GUARD REACTOR KLR TB'S (FRAME F)
NO REVISION	DATE	BY	SCALE TO FIT	DESIGNED BY EL DATE 02/19/94 DRAWING NO. C KLR-7DG SHEET 1 OF 1