

CATALOG NO	VOLTS(V.)	__mH±10%	__AMPS(A)	APPROX WT-LBS
KLR750BCB	7.20	.015	750	155
KLR750FCB	8.62	.018	750	155

TCI Performance and Protection for Drives.

TRANS-COIL, INC
MILWAUKEE WI
WWW.transcoil.com
800-824-8282

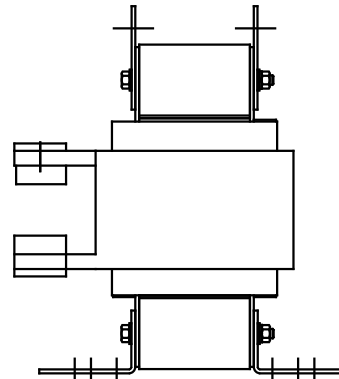
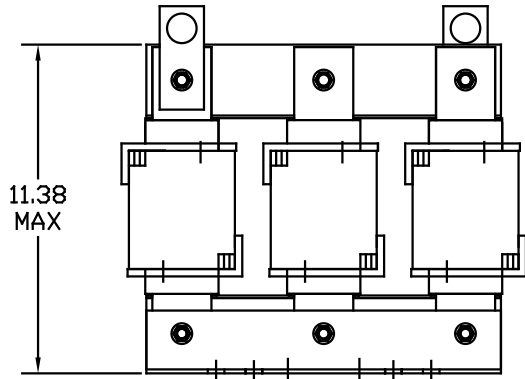
KLR Series Line Reactor

CATALOG #

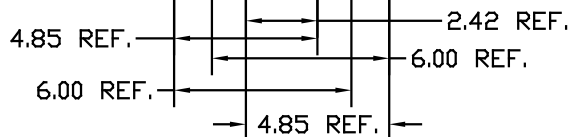
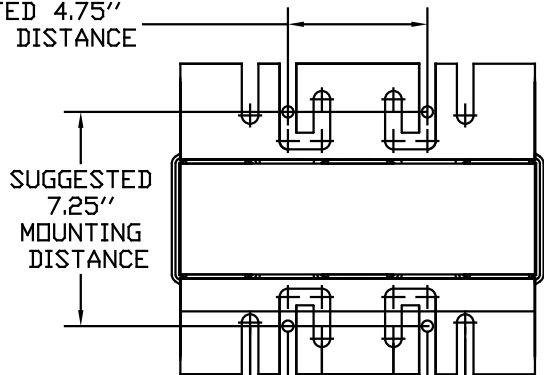
3PH, 60Hz, 600V Max, Amps
40C Amb Max, 150C Rise

UL US SF CE

.53 DIA HOLE
(6 PLACES)



SUGGESTED 4.75"
MOUNTING DISTANCE



				TOLERANCES EXCEPT AS NOTED:		TCI 7878 N. 86th STREET MILWAUKEE, WI 53224	
				DECIMAL	XX ±.03	SINE-GUARD REACTOR KLR CB'S (FRAME S)	
				FRACTIONAL	.XXX±.01		
C	2235, MOUNTING CHG	06/06/03	DSW	ANGULAR	± 1/32	DRG BY	DSW
B	2244, TERM CHG	07/25/03	RJC	SCALE	± 1/2"	DATE	01/24/02
NO	REVISION	DATE	BY	SCALE	TO FIT	APP'VE	C

KLR-57DG
SHT. 1 OF 1