

CATALOG NO	VOLTS(V.)	__mH±10%	__AMPS(A)	APPROX WT-LBS
KLR850ACB	14.40	.026	850	290
KLR850CCB	24.00	.043	850	280
KLR850DCB	17.24	.031	850	275
KLR850ECB	28.75	.052	850	290
KLR950ACB	14.40	.023	950	295
KLR950CCB	24.00	.039	950	290
KLR950DCB	17.24	.027	950	280
KLR950ECB	28.75	.046	950	290

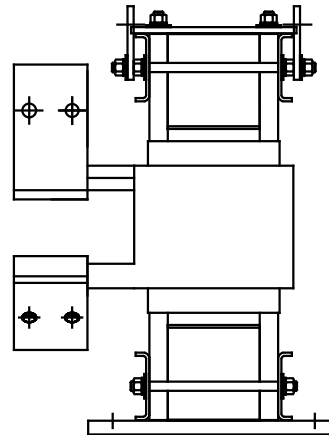
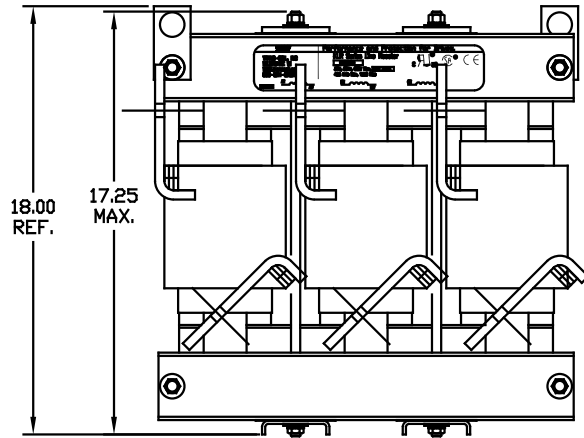
TCI Performance and Protection for Drives.

TRANS-COIL, INC
MILWAUKEE WI
WWW.TRANCOIL.COM
800-824-6282

KLR Series Line Reactor
CATALOG#
3PH, 60Hz, 600V Max, 575V
40C Amb Max, 105C Rise

UL US SP CE

A1 A2 B1 B2 C1 C2



TOLERANCES EXCEPT AS NOTED				TOLERANCES EXCEPT AS NOTED	TCI 7878 N. 86th STREET MILWAUKEE, WI 53224
DECIMAL	FRACTIONAL	ANGULAR	SCALE		
				XX ± .03	SINE-GUARD REACTOR NEW KLR CB'S DWG. NO. KLR-55DG SHT. 1 OF 1
Ø 2300, FLAG CHANGE	5/24/04 DSW			.XXX ± .010	
⊠ CURRENT LABEL	10/14/02 DSW			FRACTIONAL ± 1/16	
△ CHG GAP, ECO #2091	2/13/01 BW			ANGULAR ± 1/2°	
NO	REVISION	DATE	BY	± 1/2°	DWG. BY BW DATE 06-15-2000 SCALE 1/4"=1'