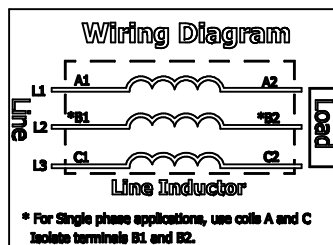
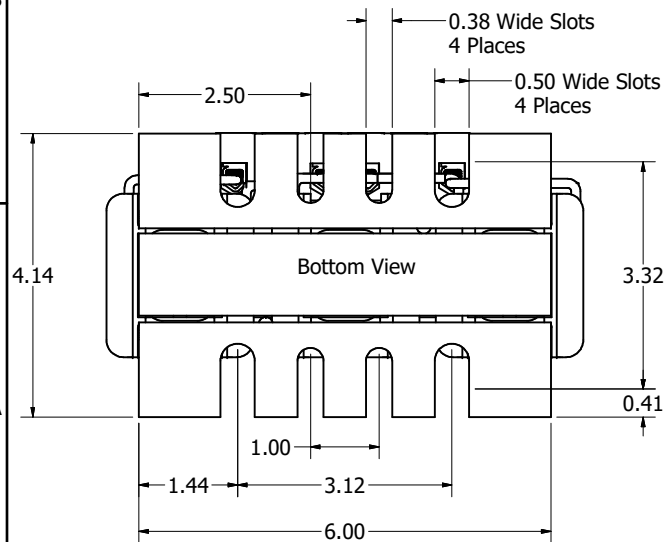
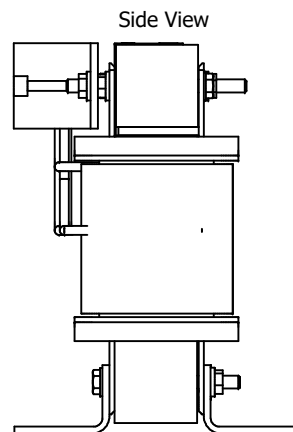
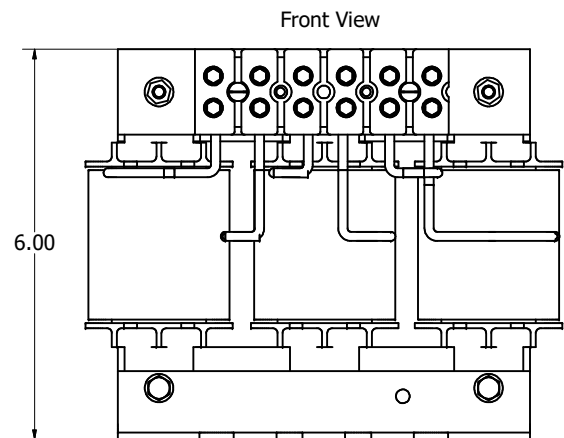
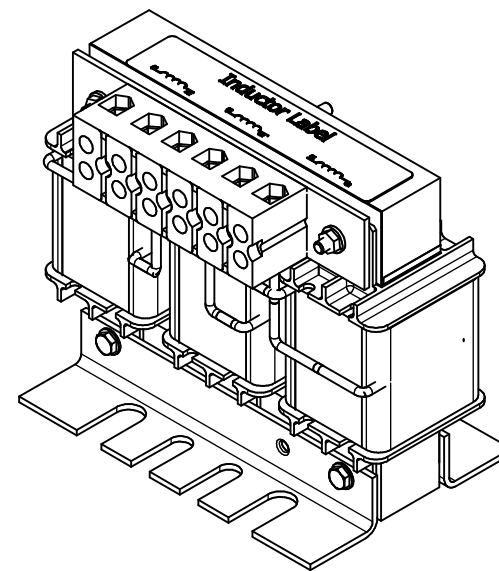


Wire Range: 4-18 AWG.  
Torque : 20 IN-LBS (2.3 Nm)

480 Rated Voltage, 600 Max Voltage				
Part Number	Horsepower (HP)	Amps (A)	Inductance (-mH) +/-10%	Weight (LBS)
KLR55BTB	40	55	0.240	11

(Customer Connections)  
Markings On Terminal Block  
For Reference Only.



Customer Is Responsible For Installation  
To Meet All National And Local Electrical Codes.  
Material(s) Shall be RoHS Compliant

DIMENSIONS IN INCHES (EXCEPT AS NOTED) TOLERANCES (EXCEPT AS NOTED) DECIMAL .XX ± .25 .XXX ± .10 FRACTIONAL ± 1/32 ANGULAR ± 1°		THE INFORMATION AND DESIGN CONTAINED IN THIS DRAWING ARE CONFIDENTIAL AND THE PROPRIETARY PROPERTY OF ALLIENT INC. AND ITS SUBSIDIARIES. NEITHER THIS DESIGN NOR ANY INFORMATION CONTAINED IN THIS DRAWING MAY BE REPRODUCED OR DISCLOSED TO OTHERS WITHOUT THE EXPRESS WRITTEN CONSENT OF ALLIENT INC. AND ITS SUBSIDIARIES.		DESIGNED BY DSW DATE 12/17/25				W132N10611 Grant Drive Germantown, WI 53022 © 2025 Allient Inc.	
KLR-Three-Phase Inductor Frame C				SCALE: 1:1.2		DEN. NO. KLR-5-4DG		SIZE C	
P	7321	KLR-5 to KLR-5-4	12/17/25	DSW	REVISION		SHT. 1 OF 1		